

THE SUMMIT--PHASE II

LOT 61 THROUGH 83

LAKE KEOWEE
POSSIBLE FLOOD EASEMENT TO 810 MSL CONTOUR.
SHORE LINE BOUNDARY FALLS ON OR ABOVE 804 MSL CONTOUR.

PLAT # D-301.3 B-4491
DISK # C:\DWG20 NAME: SUM-P2
FB # 110 PG 24

REFERENCE PLAT NORTH

LINE TABLE FOR NEAR ZONE AREA

LINE	START	END	LENGTH	BEARING
1	100.00	100.00	0.00	
2	100.00	100.00	0.00	
3	100.00	100.00	0.00	
4	100.00	100.00	0.00	
5	100.00	100.00	0.00	
6	100.00	100.00	0.00	
7	100.00	100.00	0.00	
8	100.00	100.00	0.00	
9	100.00	100.00	0.00	
10	100.00	100.00	0.00	



DESCRIPTION: P/O TWP 209-00-02-052.053
DUKE REFERENCE: K431, K992, K270, K817, K719, K240, K777-B
REFERENCE PLAT BOOK PAGE
RECORDS OF OCONEE COUNTY

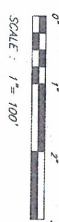
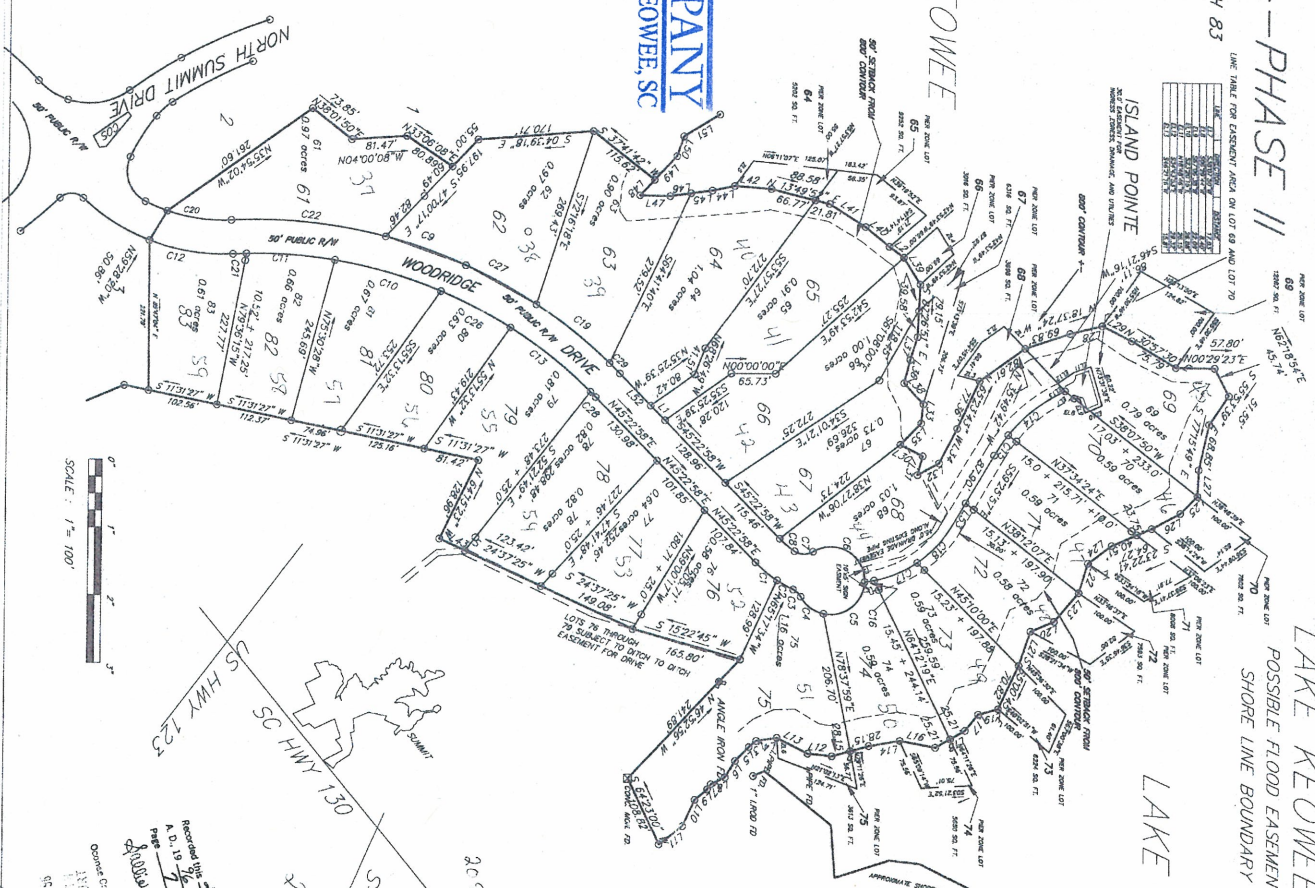
LOCATION: STATE OF SOUTH CAROLINA
COUNTY OF OCONEE
TOWNSHIP OF SENECA
CITY OF
AREA OF PARCEL: 19.35 ACRES+-

DATE: MAY 15, 1996, REVISED JUL 15, 1996, JUL 19, 1996

PLAT PREPARED FOR:
CRESCENT RESOURCES, INC.

CORNERSTONE OF SENECA, INC
123 EAST NORTH 1ST STREET
P.O. BOX 822
SENECA, SC 29679
PHONE: 803/882-6476

Michael L. Henderson
MICHAEL L. HENDERSON, PS 6946
I HEREBY STATE THAT TO THE BEST OF MY KNOWLEDGE AND BELIEF, THE SURVEY SHOWN HEREON COMES WITHIN THE REQUIREMENTS OF THE MANUAL STANDARDS MANUAL, THE REQUIREMENTS OF LAND SURVEYING IN SOUTH CAROLINA, AND MEETS OR EXCEEDS THE REQUIREMENTS FOR A CLASS B SURVEY AS SPECIFIED THEREIN. PROPERTY SUBJECT TO ANY AND ALL EASEMENTS ON RECORD. THIS DOCUMENT DOES NOT TRANSFER TITLE; NOR NECESSARILY FOLLOWS TITLE LINKS.



LAKE KEOWEE

LINE	START	END	LENGTH	BEARING
1	100.00	100.00	0.00	
2	100.00	100.00	0.00	
3	100.00	100.00	0.00	
4	100.00	100.00	0.00	
5	100.00	100.00	0.00	
6	100.00	100.00	0.00	
7	100.00	100.00	0.00	
8	100.00	100.00	0.00	
9	100.00	100.00	0.00	
10	100.00	100.00	0.00	

LINE	START	END	LENGTH	BEARING
1	100.00	100.00	0.00	
2	100.00	100.00	0.00	
3	100.00	100.00	0.00	
4	100.00	100.00	0.00	
5	100.00	100.00	0.00	
6	100.00	100.00	0.00	
7	100.00	100.00	0.00	
8	100.00	100.00	0.00	
9	100.00	100.00	0.00	
10	100.00	100.00	0.00	

Recorded by *Michael L. Henderson*
A.D. 1996 in Vol. 1181
Book 1181
Page 1181
Crescent Resources, Inc.
Seneca, SC

DATE: MAY 15, 1996, REVISED JUL 15, 1996, JUL 19, 1996
PLAT PREPARED FOR:
CRESCENT RESOURCES, INC.

REFERENCE PLAT NORTH



LINE	LINE NUMBER	BEARING
L1	33.81	N83°14'54"W
L2	24.50	N83°14'54"W
L3	24.50	N83°14'54"W
L4	24.50	N83°14'54"W
L5	24.50	N83°14'54"W
L6	24.50	N83°14'54"W
L7	24.50	N83°14'54"W
L8	24.50	N83°14'54"W
L9	24.50	N83°14'54"W
L10	24.50	N83°14'54"W
L11	24.50	N83°14'54"W
L12	24.50	N83°14'54"W
L13	24.50	N83°14'54"W
L14	24.50	N83°14'54"W
L15	24.50	N83°14'54"W
L16	24.50	N83°14'54"W
L17	24.50	N83°14'54"W
L18	24.50	N83°14'54"W
L19	24.50	N83°14'54"W
L20	24.50	N83°14'54"W
L21	24.50	N83°14'54"W
L22	24.50	N83°14'54"W
L23	24.50	N83°14'54"W
L24	24.50	N83°14'54"W
L25	24.50	N83°14'54"W
L26	24.50	N83°14'54"W
L27	24.50	N83°14'54"W
L28	24.50	N83°14'54"W
L29	24.50	N83°14'54"W
L30	24.50	N83°14'54"W
L31	24.50	N83°14'54"W
L32	24.50	N83°14'54"W
L33	24.50	N83°14'54"W
L34	24.50	N83°14'54"W
L35	24.50	N83°14'54"W
L36	24.50	N83°14'54"W
L37	24.50	N83°14'54"W
L38	24.50	N83°14'54"W
L39	24.50	N83°14'54"W
L40	24.50	N83°14'54"W
L41	24.50	N83°14'54"W
L42	24.50	N83°14'54"W
L43	24.50	N83°14'54"W
L44	24.50	N83°14'54"W
L45	24.50	N83°14'54"W
L46	24.50	N83°14'54"W
L47	24.50	N83°14'54"W
L48	24.50	N83°14'54"W
L49	24.50	N83°14'54"W
L50	24.50	N83°14'54"W
L51	24.50	N83°14'54"W
L52	24.50	N83°14'54"W
L53	24.50	N83°14'54"W
L54	24.50	N83°14'54"W
L55	24.50	N83°14'54"W
L56	24.50	N83°14'54"W
L57	24.50	N83°14'54"W
L58	24.50	N83°14'54"W
L59	24.50	N83°14'54"W
L60	24.50	N83°14'54"W
L61	24.50	N83°14'54"W
L62	24.50	N83°14'54"W
L63	24.50	N83°14'54"W
L64	24.50	N83°14'54"W
L65	24.50	N83°14'54"W
L66	24.50	N83°14'54"W
L67	24.50	N83°14'54"W
L68	24.50	N83°14'54"W
L69	24.50	N83°14'54"W
L70	24.50	N83°14'54"W
L71	24.50	N83°14'54"W
L72	24.50	N83°14'54"W
L73	24.50	N83°14'54"W
L74	24.50	N83°14'54"W
L75	24.50	N83°14'54"W
L76	24.50	N83°14'54"W
L77	24.50	N83°14'54"W
L78	24.50	N83°14'54"W
L79	24.50	N83°14'54"W
L80	24.50	N83°14'54"W
L81	24.50	N83°14'54"W
L82	24.50	N83°14'54"W
L83	24.50	N83°14'54"W
L84	24.50	N83°14'54"W
L85	24.50	N83°14'54"W
L86	24.50	N83°14'54"W
L87	24.50	N83°14'54"W
L88	24.50	N83°14'54"W
L89	24.50	N83°14'54"W
L90	24.50	N83°14'54"W
L91	24.50	N83°14'54"W
L92	24.50	N83°14'54"W
L93	24.50	N83°14'54"W
L94	24.50	N83°14'54"W
L95	24.50	N83°14'54"W
L96	24.50	N83°14'54"W
L97	24.50	N83°14'54"W
L98	24.50	N83°14'54"W
L99	24.50	N83°14'54"W
L100	24.50	N83°14'54"W

LINE	LENGTH	BEARING	CONNECTION	CONCORD DIST.
C1	422.41	N83°14'54"W		280.28
C2	212.56	N83°14'54"W		71.15
C3	212.56	N83°14'54"W		71.15
C4	212.56	N83°14'54"W		71.15
C5	212.56	N83°14'54"W		71.15
C6	212.56	N83°14'54"W		71.15
C7	212.56	N83°14'54"W		71.15
C8	212.56	N83°14'54"W		71.15
C9	212.56	N83°14'54"W		71.15
C10	212.56	N83°14'54"W		71.15
C11	212.56	N83°14'54"W		71.15
C12	212.56	N83°14'54"W		71.15
C13	212.56	N83°14'54"W		71.15
C14	212.56	N83°14'54"W		71.15
C15	212.56	N83°14'54"W		71.15
C16	212.56	N83°14'54"W		71.15
C17	212.56	N83°14'54"W		71.15
C18	212.56	N83°14'54"W		71.15
C19	212.56	N83°14'54"W		71.15
C20	212.56	N83°14'54"W		71.15
C21	212.56	N83°14'54"W		71.15
C22	212.56	N83°14'54"W		71.15
C23	212.56	N83°14'54"W		71.15
C24	212.56	N83°14'54"W		71.15
C25	212.56	N83°14'54"W		71.15
C26	212.56	N83°14'54"W		71.15
C27	212.56	N83°14'54"W		71.15
C28	212.56	N83°14'54"W		71.15
C29	212.56	N83°14'54"W		71.15
C30	212.56	N83°14'54"W		71.15
C31	212.56	N83°14'54"W		71.15
C32	212.56	N83°14'54"W		71.15
C33	212.56	N83°14'54"W		71.15
C34	212.56	N83°14'54"W		71.15
C35	212.56	N83°14'54"W		71.15
C36	212.56	N83°14'54"W		71.15
C37	212.56	N83°14'54"W		71.15
C38	212.56	N83°14'54"W		71.15
C39	212.56	N83°14'54"W		71.15
C40	212.56	N83°14'54"W		71.15
C41	212.56	N83°14'54"W		71.15
C42	212.56	N83°14'54"W		71.15
C43	212.56	N83°14'54"W		71.15
C44	212.56	N83°14'54"W		71.15
C45	212.56	N83°14'54"W		71.15
C46	212.56	N83°14'54"W		71.15
C47	212.56	N83°14'54"W		71.15
C48	212.56	N83°14'54"W		71.15
C49	212.56	N83°14'54"W		71.15
C50	212.56	N83°14'54"W		71.15

DESCRIPTION: P.D. 200-01-02-02-005
 DATE RECORDED: 4/21/1982, 4/21/1982, 4/21/1982, 4/21/1982, 4/21/1982
 RECORDS OF COURSE COUNTY

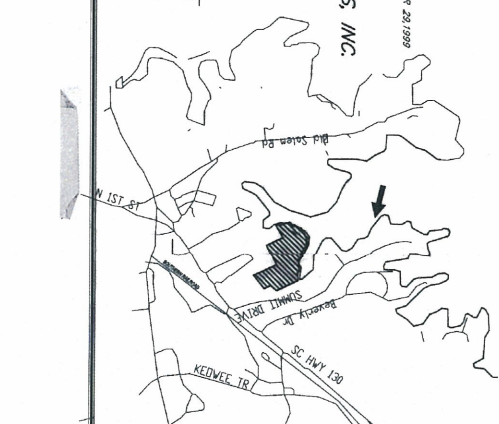
LOCATION: STATE OF SOUTH CAROLINA
 COUNTY OF SCENECIA
 TOWNSHIP OF SCENECIA
 CITY OF
 AREA OF PARCEL: AS NOTED
 DATE: SEPTEMBER 11, 1998 REVISED OCTOBER 29, 1999

PLAT PREPARED FOR:
CRESCENT RESOURCES, INC.

CORNERSTONE OF SCENECIA, INC.
 800 WINTHROP CIRCLE
 SCENECIA, SC 29679
 PHONE: 803/882-0178

MICHAEL L. HENDERSON, P.S. 6946
 LICENSED SURVEYOR IN THE STATE OF SOUTH CAROLINA
 1000 W. WINTHROP CIRCLE, SCENECIA, SC 29679
 PHONE: 803/882-0178

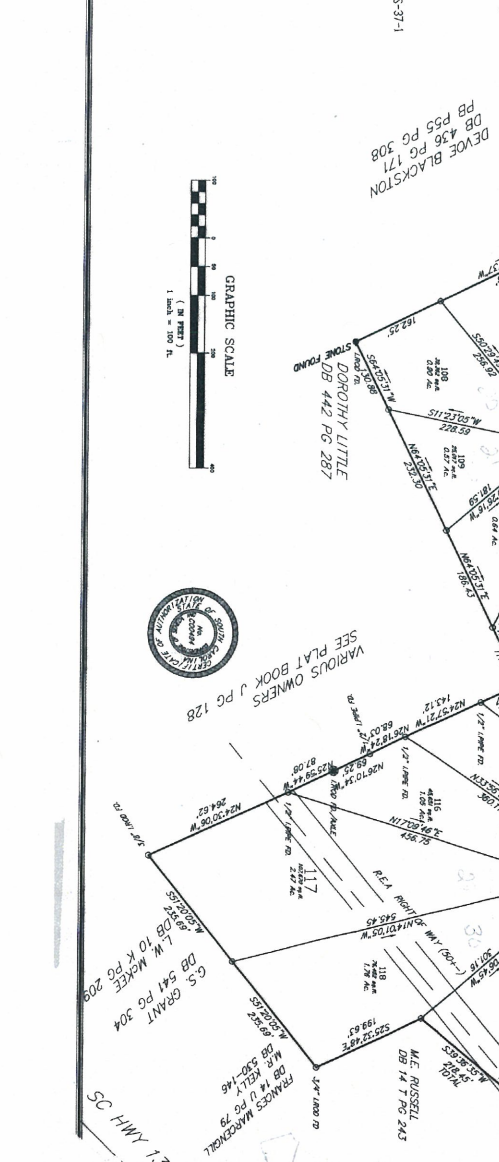
THIS PLAT IS A PART OF THE RECORDS OF COURSE COUNTY, SOUTH CAROLINA, AND IS SUBJECT TO THE RECORDS OF COURSE COUNTY, SOUTH CAROLINA, AND IS SUBJECT TO THE RECORDS OF COURSE COUNTY, SOUTH CAROLINA.



PHASE 3
 THE SUMMIT
 LOTS 89 THROUGH 123

PLAT # D-500-8-P-300
 C. LINDSEY HARRIS
 12/27/79 08:30:33 AM EST

PHASE 3
 THE SUMMIT
 LOTS 89 THROUGH 123



GRAPHIC SCALE
 1 INCH = 100 FEET



DEVOE BLACKSTON
 DB A36 PG 171
 PB P55 PG 308

DOROTHY LITTLE
 DB 442 PG 287

VARIOUS OWNERS
 SEE PLAT BOOK J PG 128

FRANCES WARGENTHAL
 DB 541 PG 304

B.H. GOODMAN
 DB 14 PG 243

M.E. RUSSELL
 DB 14 PG 243

KEOWEE TR

1ST ST N

SMITH DRIVE

BOXYN TR

90 AMT 35

1ST ST N