

003739

FILED IN RECORD ROOM OF COUNTY CLERK OF COUNTY

Recorded this day of April A.D. 19 37 in Vol. 112 of Page 3 of Smith C.C.C.P.A.s Oconee County, S.C.

PLAT # 1-100  
 DIM # 1 & 100 NAME OPCS  
 FIELD BOOK 85A PG 35  
 GRID NORTH (DINAHU)



CURVE	ARC	RADIUS	CHORD LENGTH	CHORD BEARING
17	172.45	200.91	172.38	S 89° 09' 51" E
18	152.62	200.90	152.52	S 89° 09' 51" E
19	206.20	200.91	206.12	S 89° 09' 51" E
20	180.00	200.91	180.00	S 89° 09' 51" E
21	152.62	200.91	152.52	S 89° 09' 51" E
22	172.45	200.91	172.38	S 89° 09' 51" E
23	172.45	200.91	172.38	S 89° 09' 51" E
24	152.62	200.90	152.52	S 89° 09' 51" E
25	206.20	200.91	206.12	S 89° 09' 51" E
26	180.00	200.91	180.00	S 89° 09' 51" E
27	152.62	200.91	152.52	S 89° 09' 51" E
28	172.45	200.91	172.38	S 89° 09' 51" E
29	172.45	200.91	172.38	S 89° 09' 51" E
30	152.62	200.90	152.52	S 89° 09' 51" E
31	206.20	200.91	206.12	S 89° 09' 51" E
32	180.00	200.91	180.00	S 89° 09' 51" E
33	152.62	200.91	152.52	S 89° 09' 51" E
34	172.45	200.91	172.38	S 89° 09' 51" E
35	172.45	200.91	172.38	S 89° 09' 51" E
36	152.62	200.90	152.52	S 89° 09' 51" E
37	206.20	200.91	206.12	S 89° 09' 51" E
38	180.00	200.91	180.00	S 89° 09' 51" E
39	152.62	200.91	152.52	S 89° 09' 51" E
40	172.45	200.91	172.38	S 89° 09' 51" E
41	172.45	200.91	172.38	S 89° 09' 51" E
42	152.62	200.90	152.52	S 89° 09' 51" E
43	206.20	200.91	206.12	S 89° 09' 51" E
44	180.00	200.91	180.00	S 89° 09' 51" E
45	152.62	200.91	152.52	S 89° 09' 51" E
46	172.45	200.91	172.38	S 89° 09' 51" E
47	172.45	200.91	172.38	S 89° 09' 51" E
48	152.62	200.90	152.52	S 89° 09' 51" E
49	206.20	200.91	206.12	S 89° 09' 51" E
50	180.00	200.91	180.00	S 89° 09' 51" E
51	152.62	200.91	152.52	S 89° 09' 51" E
52	172.45	200.91	172.38	S 89° 09' 51" E
53	172.45	200.91	172.38	S 89° 09' 51" E
54	152.62	200.90	152.52	S 89° 09' 51" E
55	206.20	200.91	206.12	S 89° 09' 51" E
56	180.00	200.91	180.00	S 89° 09' 51" E
57	152.62	200.91	152.52	S 89° 09' 51" E
58	172.45	200.91	172.38	S 89° 09' 51" E
59	172.45	200.91	172.38	S 89° 09' 51" E
60	152.62	200.90	152.52	S 89° 09' 51" E
61	206.20	200.91	206.12	S 89° 09' 51" E
62	180.00	200.91	180.00	S 89° 09' 51" E
63	152.62	200.91	152.52	S 89° 09' 51" E
64	172.45	200.91	172.38	S 89° 09' 51" E
65	172.45	200.91	172.38	S 89° 09' 51" E
66	152.62	200.90	152.52	S 89° 09' 51" E
67	206.20	200.91	206.12	S 89° 09' 51" E
68	180.00	200.91	180.00	S 89° 09' 51" E
69	152.62	200.91	152.52	S 89° 09' 51" E
70	172.45	200.91	172.38	S 89° 09' 51" E
71	172.45	200.91	172.38	S 89° 09' 51" E
72	152.62	200.90	152.52	S 89° 09' 51" E
73	206.20	200.91	206.12	S 89° 09' 51" E
74	180.00	200.91	180.00	S 89° 09' 51" E
75	152.62	200.91	152.52	S 89° 09' 51" E
76	172.45	200.91	172.38	S 89° 09' 51" E
77	172.45	200.91	172.38	S 89° 09' 51" E
78	152.62	200.90	152.52	S 89° 09' 51" E
79	206.20	200.91	206.12	S 89° 09' 51" E
80	180.00	200.91	180.00	S 89° 09' 51" E

# THE LAKE COMPANY

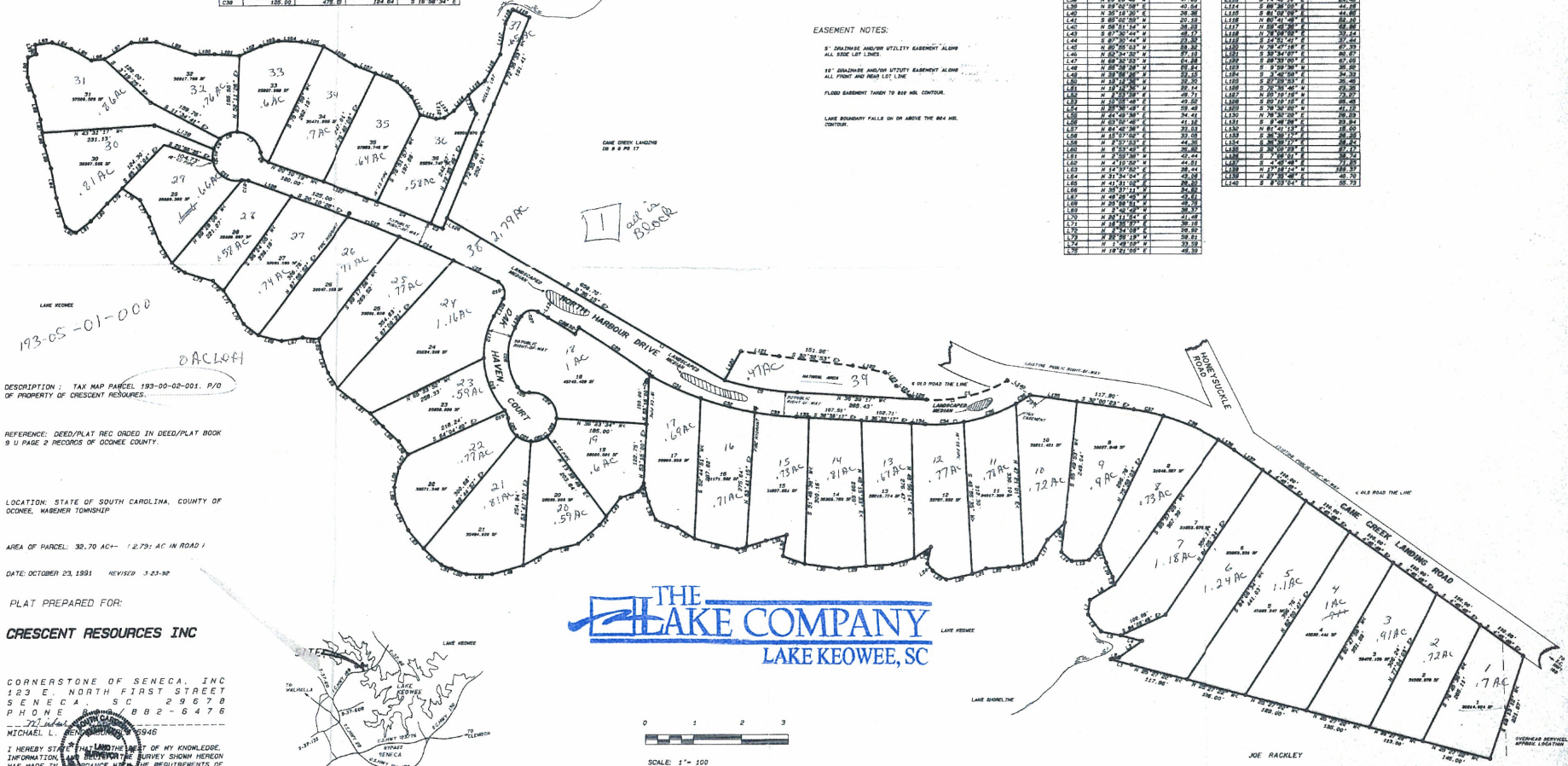
## LAKE KEOWEE, SC

**NORTH HARBOUR**

**SETBACK NOTES:**  
 FRONT SETBACKS ARE 30'  
 SIDE SETBACKS ARE 10'  
 REAR SETBACK ON INTERIOR LOTS IS 20'  
 REAR SETBACK ON WATERFRONT LOTS IS 50'  
 LAKE SHORE EASEMENT SETBACK 50'

**EASEMENT NOTES:**  
 5' DRAINAGE AND/OR UTILITY EASEMENT ALONG ALL SIDE LOT LINES.  
 10' DRAINAGE AND/OR UTILITY EASEMENT ALONG ALL FRONT AND REAR LOT LINES.  
 FLOOD EASEMENT TANGENT TO 800 HIL CONTOUR.  
 LAKE BOUNDARY FALLS ON OR ABOVE THE 804 HIL CONTOUR.

LINE	BEARING	DISTANCE	LINE	BEARING	DISTANCE
L296	N 89° 09' 51" E	44.72	L296	N 89° 09' 51" E	44.72
L297	S 89° 09' 51" E	44.72	L297	S 89° 09' 51" E	44.72
L298	N 89° 09' 51" E	44.72	L298	N 89° 09' 51" E	44.72
L299	S 89° 09' 51" E	44.72	L299	S 89° 09' 51" E	44.72
L300	N 89° 09' 51" E	44.72	L300	N 89° 09' 51" E	44.72
L301	S 89° 09' 51" E	44.72	L301	S 89° 09' 51" E	44.72
L302	N 89° 09' 51" E	44.72	L302	N 89° 09' 51" E	44.72
L303	S 89° 09' 51" E	44.72	L303	S 89° 09' 51" E	44.72
L304	N 89° 09' 51" E	44.72	L304	N 89° 09' 51" E	44.72
L305	S 89° 09' 51" E	44.72	L305	S 89° 09' 51" E	44.72
L306	N 89° 09' 51" E	44.72	L306	N 89° 09' 51" E	44.72
L307	S 89° 09' 51" E	44.72	L307	S 89° 09' 51" E	44.72
L308	N 89° 09' 51" E	44.72	L308	N 89° 09' 51" E	44.72
L309	S 89° 09' 51" E	44.72	L309	S 89° 09' 51" E	44.72
L310	N 89° 09' 51" E	44.72	L310	N 89° 09' 51" E	44.72
L311	S 89° 09' 51" E	44.72	L311	S 89° 09' 51" E	44.72
L312	N 89° 09' 51" E	44.72	L312	N 89° 09' 51" E	44.72
L313	S 89° 09' 51" E	44.72	L313	S 89° 09' 51" E	44.72
L314	N 89° 09' 51" E	44.72	L314	N 89° 09' 51" E	44.72
L315	S 89° 09' 51" E	44.72	L315	S 89° 09' 51" E	44.72
L316	N 89° 09' 51" E	44.72	L316	N 89° 09' 51" E	44.72
L317	S 89° 09' 51" E	44.72	L317	S 89° 09' 51" E	44.72
L318	N 89° 09' 51" E	44.72	L318	N 89° 09' 51" E	44.72
L319	S 89° 09' 51" E	44.72	L319	S 89° 09' 51" E	44.72
L320	N 89° 09' 51" E	44.72	L320	N 89° 09' 51" E	44.72
L321	S 89° 09' 51" E	44.72	L321	S 89° 09' 51" E	44.72
L322	N 89° 09' 51" E	44.72	L322	N 89° 09' 51" E	44.72
L323	S 89° 09' 51" E	44.72	L323	S 89° 09' 51" E	44.72
L324	N 89° 09' 51" E	44.72	L324	N 89° 09' 51" E	44.72
L325	S 89° 09' 51" E	44.72	L325	S 89° 09' 51" E	44.72
L326	N 89° 09' 51" E	44.72	L326	N 89° 09' 51" E	44.72
L327	S 89° 09' 51" E	44.72	L327	S 89° 09' 51" E	44.72
L328	N 89° 09' 51" E	44.72	L328	N 89° 09' 51" E	44.72
L329	S 89° 09' 51" E	44.72	L329	S 89° 09' 51" E	44.72
L330	N 89° 09' 51" E	44.72	L330	N 89° 09' 51" E	44.72
L331	S 89° 09' 51" E	44.72	L331	S 89° 09' 51" E	44.72
L332	N 89° 09' 51" E	44.72	L332	N 89° 09' 51" E	44.72
L333	S 89° 09' 51" E	44.72	L333	S 89° 09' 51" E	44.72
L334	N 89° 09' 51" E	44.72	L334	N 89° 09' 51" E	44.72
L335	S 89° 09' 51" E	44.72	L335	S 89° 09' 51" E	44.72
L336	N 89° 09' 51" E	44.72	L336	N 89° 09' 51" E	44.72
L337	S 89° 09' 51" E	44.72	L337	S 89° 09' 51" E	44.72
L338	N 89° 09' 51" E	44.72	L338	N 89° 09' 51" E	44.72
L339	S 89° 09' 51" E	44.72	L339	S 89° 09' 51" E	44.72
L340	N 89° 09' 51" E	44.72	L340	N 89° 09' 51" E	44.72



193-05-01-000  
 DACKLOH

DESCRIPTION: TAX MAP PARCEL 193-00-02-001. P/O OF PROPERTY OF CRESCENT RESOURCES.

REFERENCE: DEED/PLAT REC ORDED IN DEED/PLAT BOOK 9 U PAGE 2 RECORDS OF OCONEE COUNTY.

LOCATION: STATE OF SOUTH CAROLINA, COUNTY OF OCONEE, WARREN TOWNSHIP

AREA OF PARCEL: 30.70 AC +/- 1.279 AC IN ROAD

DATE: OCTOBER 23, 1991 REVISED: 3-23-93

PLAT PREPARED FOR:

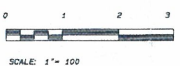
**CRESCENT RESOURCES INC**

CORNERSTONE OF SENECA, INC  
 123 E. NORTH FIRST STREET  
 SENECA, SC 29670  
 PHONE 888-2-6476  
 MICHAEL L. 5946

I HEREBY STATE AND BELIEVE ON THE BASIS OF MY KNOWLEDGE, INFORMATION AND BELIEF THAT THE SURVEY SHOWN HEREON WAS MADE IN ACCORDANCE WITH THE REQUIREMENTS OF THE MINIMUM STANDARD FOR THE PRACTICE OF LAND SURVEYING IN THE STATE OF SOUTH CAROLINA, AND MEETS OR EXCEEDS THE REQUIREMENTS FOR A CLASS B SURVEY AS SPECIFIED THEREIN.

# THE LAKE COMPANY

## LAKE KEOWEE, SC



SCALE: 1" = 100'

JOE RACKLEY