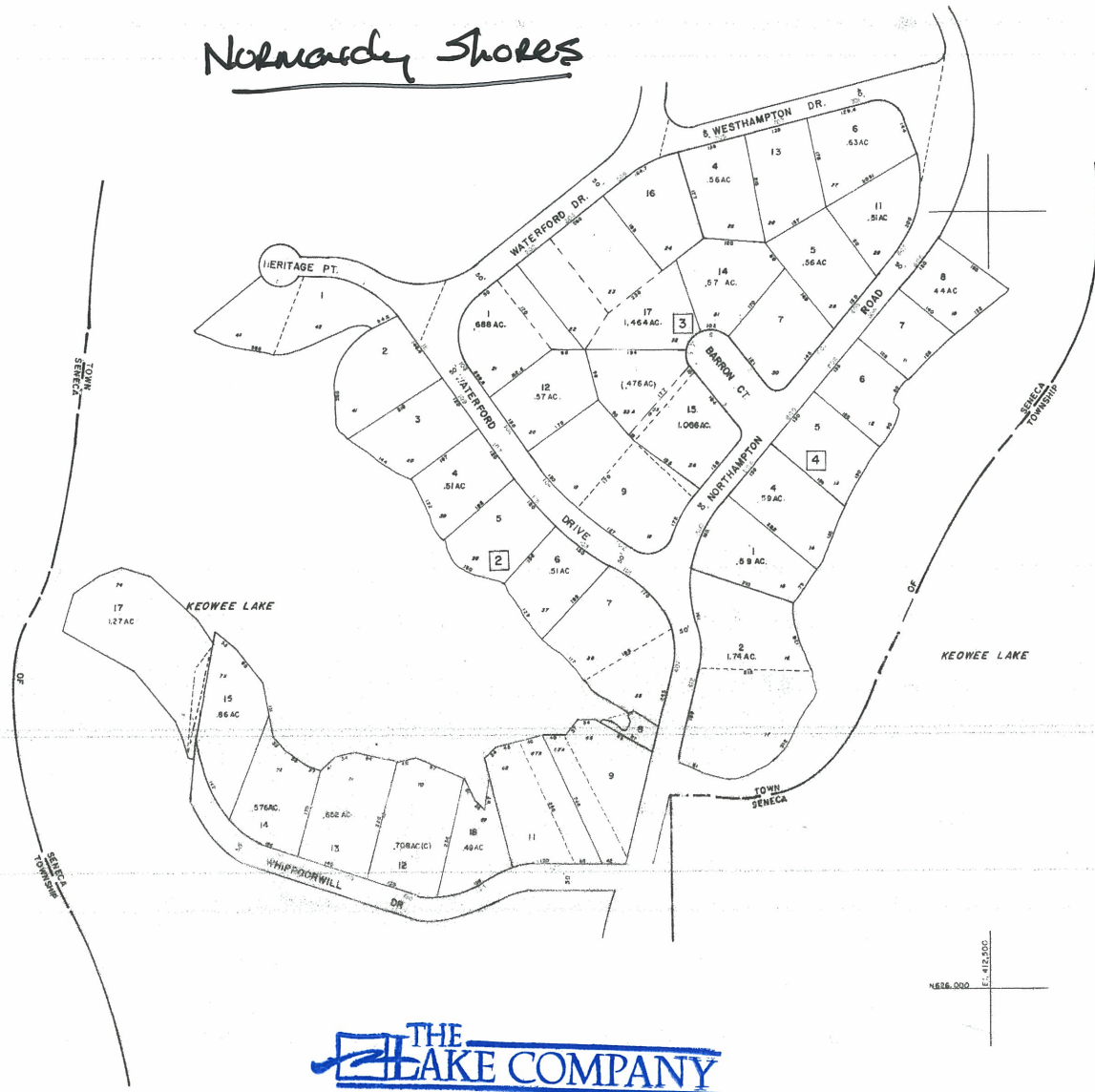
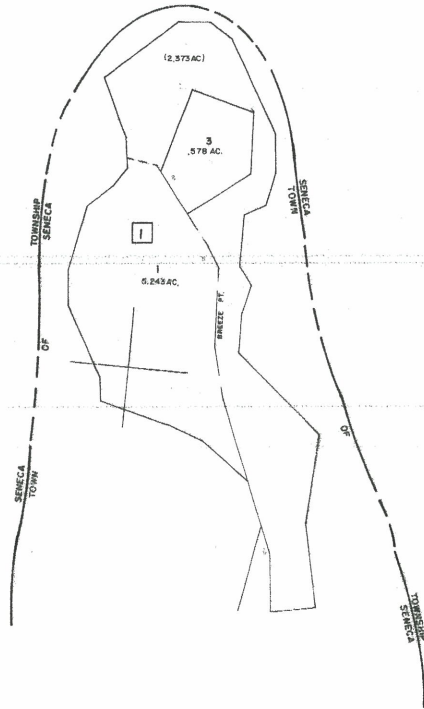


Normandy Shores

N 627,500
E 1,400,000



KEOWEE LAKE



N 628,000
E 412,500



SHEET 520-04

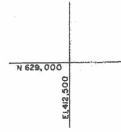
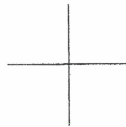
OCONEE COUNTY ASSESSOR'S OFFICE
P.O. BOX 341
WALFALLA, SC 29693
FOR TAX PURPOSES ONLY

REVISIONS			
DATE	BY	DATE	BY
4-12-76	VGS		
8-16-89	JMM		

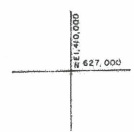
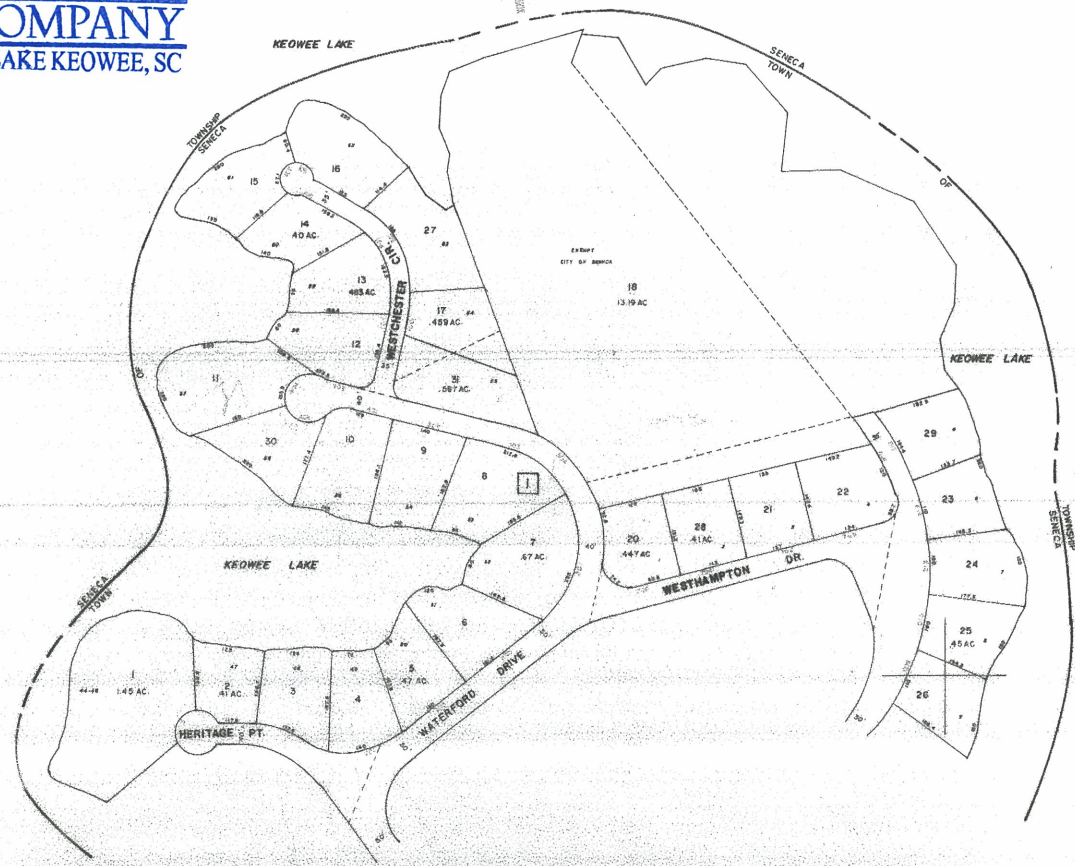
LEGEND			
STATE LINE	PARCEL NO.	FILED PLAN LOT NO.	
COUNTY LINE	AREA (SQ. FT.)	STATE HIGHWAY	
TOWNSHIP LINE	DIMENSIONS (IN FT.)	STATE HIGHWAY	
PROPERTY LINE	FILED PLAN BLOCK NO.	STATE HIGHWAY	
ORIGINAL LOT LINE			

OCONEE COUNTY - SC.
PHOTO NO. _____ DATE OF MAP _____
DATE OF PHOTO _____ SCALE: 1" = 400'

TOWN OF SENECA
209-13
MAP NO. 520-04

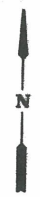


THE LAKE COMPANY
LAKE KEOWEE, SC



REVISIONS					
DATE	BY	DATE	BY		
2-4-92	BJV				

STATE		COUNTY		PROJECT		DATE	
SC	OCONEE	LAKE KEOWEE	WESTHAMPTON	2000	02	04	04



THE LAKE COMPANY
LAKE KEOWEE, SC



SHEET 520-06

PREPARED BY
OCONEE COUNTY ASSESSOR'S OFFICE
P.O. BOX 541
WALHALLA, S.C. 29693
FOR TAX PURPOSES ONLY

REVISIONS			
DATE	BY	DATE	BY
2-18-83	RJV		

LEGEND			
STATE LINE	BLOCK NO.	FILED PLAN LOT NO.	FILED PLAN LOT NO.
COUNTY LINE	PARCEL NO.	UNINCORPORATED HIGHWAY	UNINCORPORATED
TOWNSHIP	AREA (DASHED LINE)	CONCRETE DRIVE	STATE HIGHWAY
PROPERTY LINE	DIMENSIONS (DASHED LINE)	STATE HIGHWAY	STATE HIGHWAY
ORIGINAL LOT LINE	FILED PLAN BLOCK NO.	STATE SECONDARY ROAD	

OCONEE COUNTY - SC.
PHOTO NO. 200-01 DATE OF MAP
DATE OF PHOTO SCALE 1"=100'

TOWN OF SENECA
520-07
MAP NO. 520-07