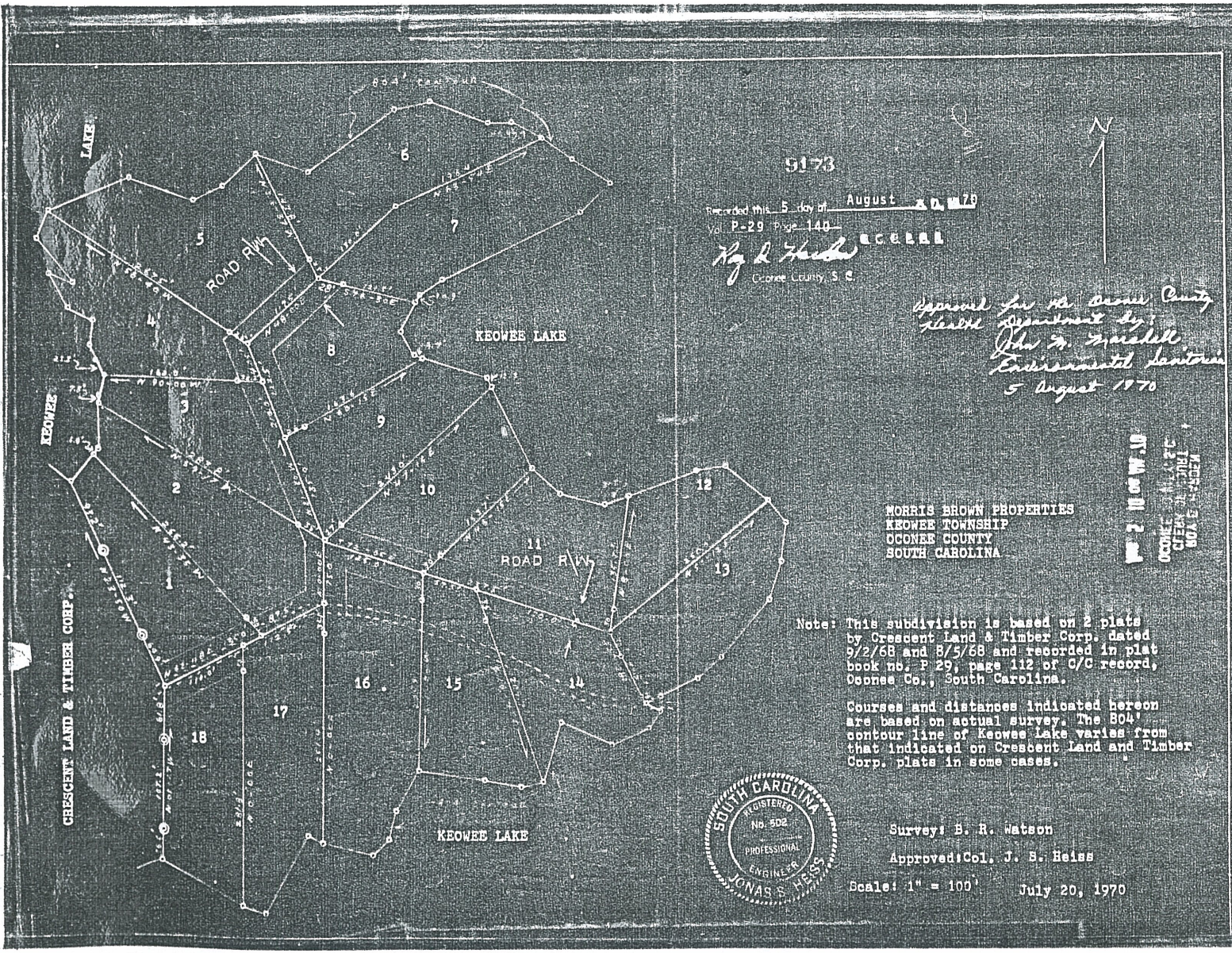


**THE LAKE COMPANY**  
LAKE KEOWEE, SC

**THE LAKE COMPANY**  
LAKE KEOWEE, SC



5173

Recorded this 5 day of August 1970  
Vol. P-29 Page 140

*Roy L. Heiss*  
Orange County, S. C.

Approved for the Orange County  
Health Department by:  
*John W. Miedell*  
Environmental Sanitary  
5 August 1970

MORRIS BROWN PROPERTIES  
KEOWEE TOWNSHIP  
OCONEE COUNTY  
SOUTH CAROLINA

Map 2 10 of W. 10  
OCONEE COUNTY  
SOUTH CAROLINA  
804 E. 11th St.

Note: This subdivision is based on 2 plats  
by Crescent Land & Timber Corp. dated  
9/2/68 and 8/5/68 and recorded in plat  
book no. P 29, page 112 of C/C record,  
Oconee Co., South Carolina.

Courses and distances indicated hereon  
are based on actual survey. The 804'  
contour line of Keowee Lake varies from  
that indicated on Crescent Land and Timber  
Corp. plats in some cases.



Surveyor: B. R. Watson  
Approved: Col. J. S. Heiss

Scale: 1" = 100' July 20, 1970

MORRIS BROWN  
Estates