

THE LAKE COMPANY

LAKE KEOWEE, SC

56-03-01

10.607 AC. SUB
 P.O. 56-00-03-022
 23 0473 AC 1.624
 PLAT PREPARED FOR:
 CRESCENT RESOURCES, INC.
 Recorded this 29th day of Dec. 1995
 Vol. 43 Page 3
 Mellen G. Smith
 Oconee County, S.C.

REF. NORTH
 P.B. A-23 PG. 04



LINE	BEARING	DISTANCE
L1	N 87°52'14" E	25.00
L2	S 77°52'14" E	6.18
L3	S 28°52'14" E	30.00
L4	S 21°14'14" E	76.27
L5	S 21°14'14" E	37.00
L6	S 21°14'14" E	46.77
L7	S 21°14'14" E	46.77
L8	S 21°14'14" E	46.77
L9	S 21°14'14" E	46.77
L10	S 21°14'14" E	46.77
L11	S 21°14'14" E	46.77
L12	S 21°14'14" E	46.77
L13	S 21°14'14" E	46.77
L14	S 21°14'14" E	46.77
L15	S 21°14'14" E	46.77
L16	S 21°14'14" E	46.77
L17	S 21°14'14" E	46.77
L18	S 21°14'14" E	46.77
L19	S 21°14'14" E	46.77
L20	S 21°14'14" E	46.77
L21	S 21°14'14" E	46.77
L22	S 21°14'14" E	46.77
L23	S 21°14'14" E	46.77
L24	S 21°14'14" E	46.77
L25	S 21°14'14" E	46.77
L26	S 21°14'14" E	46.77
L27	S 21°14'14" E	46.77
L28	S 21°14'14" E	46.77
L29	S 21°14'14" E	46.77
L30	S 21°14'14" E	46.77
L31	S 21°14'14" E	46.77
L32	S 21°14'14" E	46.77
L33	S 21°14'14" E	46.77
L34	S 21°14'14" E	46.77
L35	S 21°14'14" E	46.77
L36	S 21°14'14" E	46.77
L37	S 21°14'14" E	46.77
L38	S 21°14'14" E	46.77
L39	S 21°14'14" E	46.77
L40	S 21°14'14" E	46.77
L41	S 21°14'14" E	46.77
L42	S 21°14'14" E	46.77
L43	S 21°14'14" E	46.77
L44	S 21°14'14" E	46.77
L45	S 21°14'14" E	46.77
L46	S 21°14'14" E	46.77
L47	S 21°14'14" E	46.77
L48	S 21°14'14" E	46.77
L49	S 21°14'14" E	46.77
L50	S 21°14'14" E	46.77
L51	S 21°14'14" E	46.77
L52	S 21°14'14" E	46.77
L53	S 21°14'14" E	46.77
L54	S 21°14'14" E	46.77
L55	S 21°14'14" E	46.77
L56	S 21°14'14" E	46.77
L57	S 21°14'14" E	46.77
L58	S 21°14'14" E	46.77
L59	S 21°14'14" E	46.77
L60	S 21°14'14" E	46.77
L61	S 21°14'14" E	46.77
L62	S 21°14'14" E	46.77
L63	S 21°14'14" E	46.77
L64	S 21°14'14" E	46.77
L65	S 21°14'14" E	46.77
L66	S 21°14'14" E	46.77
L67	S 21°14'14" E	46.77
L68	S 21°14'14" E	46.77
L69	S 21°14'14" E	46.77
L70	S 21°14'14" E	46.77
L71	S 21°14'14" E	46.77
L72	S 21°14'14" E	46.77
L73	S 21°14'14" E	46.77
L74	S 21°14'14" E	46.77
L75	S 21°14'14" E	46.77
L76	S 21°14'14" E	46.77
L77	S 21°14'14" E	46.77
L78	S 21°14'14" E	46.77
L79	S 21°14'14" E	46.77
L80	S 21°14'14" E	46.77
L81	S 21°14'14" E	46.77
L82	S 21°14'14" E	46.77
L83	S 21°14'14" E	46.77
L84	S 21°14'14" E	46.77
L85	S 21°14'14" E	46.77
L86	S 21°14'14" E	46.77
L87	S 21°14'14" E	46.77
L88	S 21°14'14" E	46.77
L89	S 21°14'14" E	46.77
L90	S 21°14'14" E	46.77
L91	S 21°14'14" E	46.77
L92	S 21°14'14" E	46.77
L93	S 21°14'14" E	46.77
L94	S 21°14'14" E	46.77
L95	S 21°14'14" E	46.77
L96	S 21°14'14" E	46.77
L97	S 21°14'14" E	46.77
L98	S 21°14'14" E	46.77
L99	S 21°14'14" E	46.77
L100	S 21°14'14" E	46.77

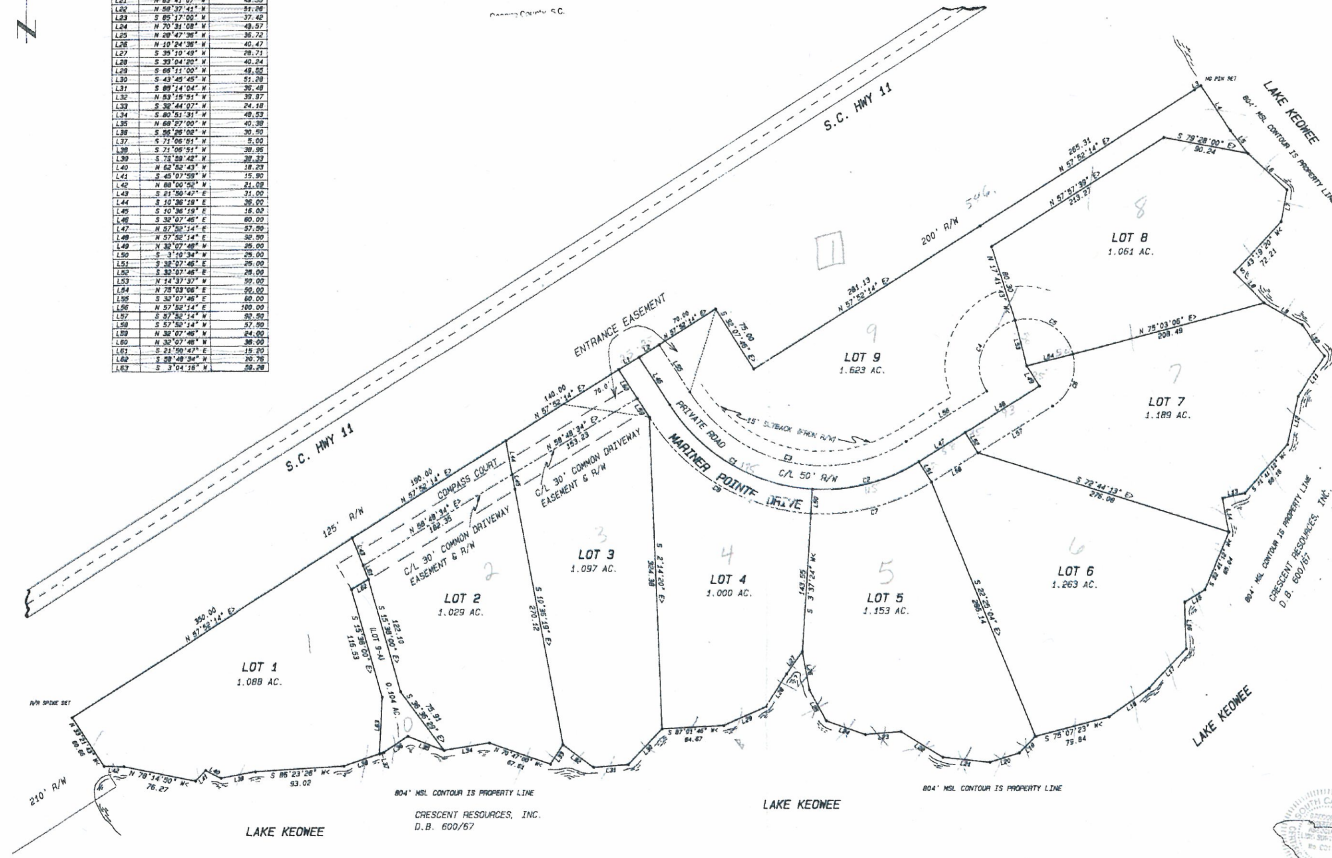
CURVE	ARC	DELTA	CHORD	CHORD BEARING
C1	289.87	84.43 24.1	180.00	S 27°49'58" E
C2	112.00	30.00 20.0	100.00	S 27°49'58" E
C3	289.87	84.43 24.1	180.00	S 27°49'58" E
C4	89.41	100.00 50.0	100.00	S 27°49'58" E
C5	70.00	89.40 43.1	80.00	S 27°49'58" E
C6	82.00	100.00 50.0	100.00	S 27°49'58" E
C7	130.00	100.00 50.0	100.00	S 27°49'58" E
C8	289.87	84.43 24.1	180.00	S 27°49'58" E

Recorded this 29th day of Dec. 1995 in Vol. 43 Page 3 and Certified:
 Mellen G. Smith
 C.C.P.G.S.

NOTES:
 BUILDING SETBACKS - 35' FRONT (FROM ROAD R/W),
 10' SIDE, 50' REAR (LAKE SIDE) - UNLESS NOTED OTHERWISE
 ALL PROPERTY CORNERS ARE 5/8" PREBAR SET UNLESS NOTED
 CORNERS IN C/L ROAD R/W ARE PK/CAP'S SET
 PROPERTY MAY BE SUBJECT TO FLOOD EASEMENT TO 810' MSL CONTOUR LINE

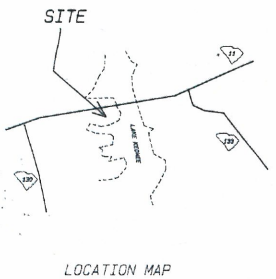
MARINER POINT

A CRESCENT COMMUNITY



SUBDIVISION ON SC HWY 11 AT LAKE KEOWEE
 REF. D.B. 600 PG. 67
 REF. P.B. A-23 PG. 4
 P/O TRM# 56-00-03-022

ACREAGE - 10.609
 DATE: MAY 1, 1995 (REVISED-6/29/95)
 STATE OF SOUTH CAROLINA
 COUNTY OF OCONEE
 TOWNSHIP OF KEOWEE
 SCALE: 1" = 60'



I HEREBY STATE THAT TO THE BEST OF MY KNOWLEDGE, INFORMATION, AND BELIEF, THE SURVEY SHOWN HEREIN WAS MADE IN ACCORDANCE WITH THE REQUIREMENTS OF THE MINIMUM STANDARDS MANUAL FOR THE PRACTICE OF LAND SURVEYING IN SOUTH CAROLINA, AND MEETS OR EXCEEDS THE REQUIREMENTS FOR A CLASS B SURVEY AS SPECIFIED THEREIN.

THERE ARE NO VISIBLE ENCROACHMENTS OR PROJECTIONS OTHER THAN SHOWN.

Gregory Blake Sosebee
 GREGORY BLAKE SOSEBEE P.L.S.#14818
 P.O. BOX 275, SEMECA S.C. 29679-0275
 TELEPHONE (803) 856-0024



NOTE: THIS PROPERTY IS SUBJECT TO ALL EASEMENTS & R/W'S OF RECORD

THE LAKE COMPANY

LAKE KEOWEE, SC