

# THE LAKE COMPANY LAKE KEOWEE, SC

FILED FOR RECORD  
OCONEE COUNTY  
SEP 26 1 47 PM '97  
SALLIE G. SMITH  
CLERK OF COURT

164-03-01-033  
7.19 ac

PLAT PREPARED FOR: all *Point Change* here

## CRESCENT RESOURCES INC. BEACON SHORES

PHASE I - PLAT 2) **SOUTH**

164-03-02

TRACT ON LUTHER LAND ROAD (SE-4)  
REF: D.B. 10-E-318, 413/208  
REF: P.B. (DUKE POWER K-MAP)  
TWP# 164-00-04-007  
*70.17 ac*  
*14.28*  
*- 96.17*  
*38.11 ac*

ACREAGE - AS SHOWN

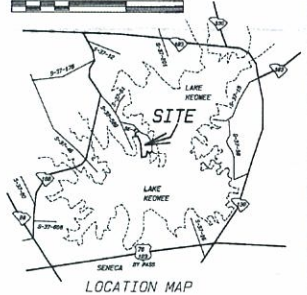
DATE: AUGUST 28, 1997

STATE OF SOUTH CAROLINA

COUNTY OF OCONEE

TOWNSHIP OF SENECA

SCALE: 1" = 100'



I HEREBY STATE THAT TO THE BEST OF MY KNOWLEDGE, INFORMATION, AND BELIEF, THE SURVEY SHOWN HEREIN WAS MADE IN ACCORDANCE WITH THE REQUIREMENTS OF THE MINIMUM STANDARDS MANUAL FOR THE PRACTICE OF LAND SURVEYING IN SOUTH CAROLINA, AND MEETS OR EXCEEDS THE REQUIREMENTS FOR A CLASS B SURVEY AS SPECIFIED THEREIN.

THERE ARE NO VISIBLE ENCROACHMENTS OR PROJECTIONS OTHER THAN SHOWN.

*Gregory Blake Sosebee*  
S.C.

GREGORY BLAKE SOSEBEE P.L.S. # 14819  
P.O. BOX 275 SENECA, S.C. 29679-0275  
TELEPHONE: (864) 882-0024

PROJECT-BEACON J28-031-075 - 2

DRAWING #11-0

REF. FLAT NORTH  
DUKE POWER K-MAP

LINE	BEARING	DISTANCE
L1	S 82°05'48" W	141.89
L2	S 71°14'15" W	105.00
L3	S 70°58'50" E	49.40
L4	S 70°58'50" E	78.00
L5	S 69°08'57" E	48.56
L6	S 69°08'57" E	75.00
L7	S 54°58'04" E	49.21
L8	S 54°58'04" E	75.00
L9	N 72°40'27" W	105.00
L10	N 64°50'36" W	20.50
L11	S 69°11'14" W	77.00
L12	S 43°05'00" W	43.52
L13	S 68°50'28" W	37.81
L14	S 48°57'42" W	45.81
L15	N 81°47'19" E	45.38
L16	N 53°12'54" W	37.69
L17	N 43°14'11" W	38.82
L18	N 17°37'55" E	63.40
L19	S 72°40'27" W	26.59
L20	S 69°08'57" E	46.41
L21	S 71°03'50" W	43.83
L22	S 71°03'50" W	36.50
L23	S 30°15'06" W	46.17
L24	S 10°05'00" W	37.82
L25	N 69°08'50" E	65.13
L26	N 70°18'50" E	76.50
L27	N 71°44'57" E	37.03
L28	N 60°01'54" E	68.50
L29	N 80°14'50" E	41.70
L30	N 83°11'51" E	40.38
L31	N 82°48'50" E	44.40
L32	N 87°59'52" E	38.28
L33	S 09°08'14" E	45.17
L34	N 69°48'57" E	25.73
L35	N 88°11'48" E	60.71
L36	S 40°28'50" E	68.39
L37	N 40°11'50" E	81.10
L38	N 40°11'50" E	47.30
L39	S 77°59'52" E	36.78
L40	N 80°50'51" E	75.00
L41	N 80°50'51" E	34.62
L42	N 70°18'50" E	38.51
L43	N 89°27'52" E	28.38
L44	N 10°10'30" E	31.51
L45	N 27°21'54" E	28.14
L46	N 27°21'54" E	36.14
L47	N 20°19'50" E	36.13
L48	N 10°10'30" E	46.50
L49	N 78°47'50" E	44.88
L50	S 50°48'48" E	47.80
L51	N 30°15'06" W	34.86
L52	N 30°15'06" W	41.54
L53	N 03°57'41" W	41.54
L54	N 21°50'00" E	44.70

CURVE	ARC	CHORD	RADIUS	CHORD LENGTH	CHORD BEARING
C1	84.87	131.7174	276.81	84.78	S 10°32'48" W
C2	121.02	182.7174	276.81	100.31	S 47°02'11" W
C3	54.39	80.7050	30.00	49.50	S 37°50'11" W
C4	121.02	182.7174	276.81	100.31	S 47°02'11" W
C5	108.37	167.7211	242.99	100.50	N 88°12'50" W
C6	70.80	107.7254	150.00	70.80	S 30°33'14" W
C7	134.39	184.4184	267.50	87.87	N 78°48'14" E
C8	78.51	118.2758	150.00	78.51	S 10°32'48" W
C9	57.84	88.5248	30.00	57.84	S 37°50'11" W
C10	121.02	182.7174	276.81	100.31	S 47°02'11" W
C11	108.37	167.7211	242.99	100.50	N 88°12'50" W
C12	121.02	182.7174	276.81	100.31	S 47°02'11" W
C13	116.48	178.7649	260.49	110.00	S 60°11'05" E
C14	100.30	158.7692	240.49	100.00	S 39°58'15" E
C15	200.57	318.5384	400.83	200.57	S 27°59'17" W
C16	100.30	158.7692	240.49	100.00	S 39°58'15" E
C17	54.39	80.7050	30.00	49.50	S 37°50'11" E
C18	100.30	158.7692	240.49	100.00	S 39°58'15" E
C19	112.85	174.3050	188.18	117.88	S 71°31'58" W
C20	36.44	57.7028	188.18	36.44	S 71°31'58" W
C21	17.27	26.7448	26.00	17.18	N 78°48'14" E
C22	88.50	136.7811	86.00	28.84	S 78°18'20" W
C23	88.50	136.7811	86.00	28.84	S 78°18'20" W
C24	66.47	101.7014	50.00	51.08	S 71°31'58" W

PIER ZONE ANNOTATION

LINE	BEARING	DISTANCE
L46	S 09°47'24" W	81.85
L48	S 20°19'50" E	46.71
L47	S 71°44'58" W	60.00
L49	N 09°08'14" E	74.40
L48	S 24°08'41" W	77.70
L50	N 80°50'51" E	77.00
L51	S 48°09'51" W	60.00
L52	S 30°15'06" W	68.39
L53	S 30°15'06" W	68.39
L54	S 30°15'06" W	68.39
L55	S 30°15'06" W	68.39
L56	S 30°15'06" W	68.39
L57	S 30°15'06" W	68.39
L58	N 44°47'48" E	49.71
L59	S 81°11'51" E	38.14
L60	S 28°38'48" E	21.38
L61	N 51°50'51" E	69.79

- EASEMENTS
- 5' DRAINAGE AND UTILITY EASEMENTS ALONG ALL SIDE LOT LINES.
  - 10' DRAINAGE AND UTILITY EASEMENTS ALONG ALL FRONT AND REAR LOT LINES (EXCEPT ALONG WATERFRONT)
  - FLOOD EASEMENT TAKEN TO THE 810' MSL CONTOUR
  - PRIVATE ROAD EASEMENTS ARE MEASURED FROM CENTERLINE OF EXISTING PAVEMENT AND EXTEND 15' ON EACH SIDE. (AS BUILT)
  - TURN ARROUND AREAS AND CUL-DE-SAC EASEMENTS ON PRIVATE ROADS EXTEND 5' BEYOND BACK OF EXISTING CURB. (AS BUILT)

- BUILDING SETBACKS
- FRONT SETBACKS ARE 50 FEET FROM PUBLIC R/W
  - FRONT SETBACKS ARE 25 FEET FROM CURB ON PRIVATE ROAD EASEMENTS
  - SIDE SETBACKS ARE 10 FEET FROM PROPERTY LINE
  - REAR SETBACKS ARE 30 FEET FROM PROPERTY LINE
  - WATERFRONT SETBACKS ARE 50 FEET MEASURED FROM THE 804' MSL CONTOUR

NOTE: ALL CORNERS ARE IPS 1/2" REBAR UNLESS NOTED.  
NOTE: THIS PROPERTY IS SUBJECT TO ALL EASEMENTS & R/W'S OF RECORD.



REF. PLAT NORTH  
DUKE POWER K-MAP



**THE LAKE COMPANY**  
LAKE KEOWEE, SC

PLAT PREPARED FOR:  
**CRESCENT RESOURCES INC.**

TRACT ON PETTY ROAD (S-37-589)  
REF. J.B. 10-E/318, 413/208  
REF. P.B. (DUKE POWER K-MAP)  
P/O TMP# 164-00-04-007

ACREAGE - (AS SHOWN)

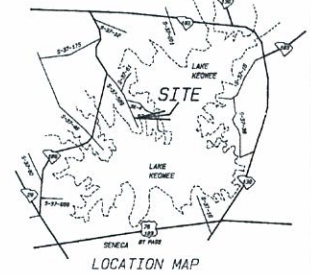
DATE: OCTOBER 28, 1997

STATE OF SOUTH CAROLINA

COUNTY OF OCONEE

TOWNSHIP OF SENECA

SCALE: 1" = 100'



LINE	BEARING	DISTANCE
1.1	N 65° 20' 33" E	39.15
1.2	N 28° 20' 33" E	24.36
1.3	N 11° 07' 51" E	52.84
1.4	N 29° 28' 18" E	25.54
1.5	S 49° 08' 02" W	41.48
1.6	S 49° 22' 52" W	38.29
1.7	S 44° 43' 23" W	36.70
1.8	S 69° 41' 05" W	24.30
1.9	N 67° 40' 58" W	34.32
1.10	N 54° 04' 15" W	30.65
1.11	N 18° 23' 52" W	53.48
1.12	N 08° 20' 33" W	22.07
1.13	N 00° 42' 27" E	42.97
1.14	N 13° 07' 18" E	48.50
1.15	S 50° 02' 11" W	30.70
1.16	S 27° 37' 25" W	30.09
1.17	S 50° 02' 11" W	30.70
1.18	N 08° 20' 33" W	22.07
1.19	S 29° 40' 58" W	20.87
1.20	S 08° 07' 00" W	29.89
1.21	S 29° 28' 18" W	20.58
1.22	S 81° 44' 11" W	23.83
1.23	S 29° 28' 18" W	24.28
1.24	S 18° 18' 40" E	28.86
1.25	S 22° 42' 21" E	42.84
1.26	S 08° 12' 06" W	27.30
1.27	S 24° 03' 04" E	27.11
1.28	S 12° 52' 10" E	27.60
1.29	S 18° 20' 10" E	20.43
1.30	S 11° 50' 40" E	62.69
1.31	S 26° 48' 20" E	68.99
1.32	S 13° 18' 11" E	69.03
1.33	N 00° 53' 53" E	10.08
1.34	N 03° 28' 00" E	21.00
1.35	N 00° 54' 10" E	61.63
1.36	N 00° 18' 50" E	30.53
1.37	N 02° 08' 04" E	61.41
1.38	N 04° 08' 20" W	51.53
1.39	N 00° 13' 58" E	20.20
1.40	N 07° 28' 00" W	50.14
1.41	N 10° 00' 30" W	62.17
1.42	N 08° 00' 00" E	40.11
1.43	S 17° 07' 18" W	60.40
1.44	N 00° 54' 10" E	60.88
1.45	N 00° 53' 10" E	53.28
1.46	S 81° 34' 00" E	37.64
1.47	S 60° 37' 00" E	37.63

NOTE: STATE MAINTENANCE  
ENDS AT 3/4" PIPE

NOTE: 1/2" REBAR SET AT ALL CORNERS UNLESS NOTED.

LAKE KEOWEE  
864' M.S.L. CONTOUR IS LINE

Tract A  
164-00-04-026  
Tracts B,C & F  
164-00-04-027  
Tract E  
164-00-04-028  
Tract G  
164-00-04-029

6.745 ac  
Total

164-00-04-007  
37.8 ac  
37.8 ac

Recorded this 10 day of Jan  
A. D. 1997 in Vol. B-530  
Page 4 and Certified  
William C. Smith  
C.C.P.A.S.  
Oconee County, S.C.

I HEREBY STATE THAT TO THE BEST OF MY KNOWLEDGE,  
INFORMATION AND BELIEF, THE SURVEY SHOWN HEREIN WAS  
MADE IN ACCORDANCE WITH THE REQUIREMENTS OF THE  
MINIMUM STANDARDS MANUAL FOR THE PRACTICE OF LAND  
SURVEYING IN SOUTH CAROLINA, AND MEETS OR EXCEEDS  
THE REQUIREMENTS FOR A CLASS B SURVEY AS SPECIFIED  
THEREIN.

THERE ARE NO VISIBLE ENCROACHMENTS OR PROJECTIONS  
OTHER THAN SHOWN.

*Gregory Blake Roser*

GREGORY BLAKE ROSER P.L.S. # 14818  
P.O. BOX 279 SENECA, S.C. 29679-0279  
TELEPHONE (864) 882-0024



S.C.

NOTE: THIS PROPERTY IS SUBJECT TO ALL EASEMENTS & R/W'S OF RECORD.

FILED OCTOBER 29 1997  
CLERK OF COURT  
OCONEE COUNTY  
SOUTH CAROLINA

FILED OCTOBER 29 1997  
CLERK OF COURT  
OCONEE COUNTY  
SOUTH CAROLINA

164-00-04-007

0 ac off

LOT	ACRES	OWNER	DEED	DATE	REMARKS
116	0.774	...	...	...	...
115	0.743	...	...	...	...
114	0.732	...	...	...	...
113	0.661	...	...	...	...
112	0.776	...	...	...	...
111	0.859	...	...	...	...

PIER ZONE ANNOTATION

LOT	ACRES	OWNER	DEED	DATE	REMARKS
116	0.774	...	...	...	...
115	0.743	...	...	...	...
114	0.732	...	...	...	...
113	0.661	...	...	...	...
112	0.776	...	...	...	...
111	0.859	...	...	...	...

Recorded 25 Sept 98  
vs. 16127-04-01-01 and 01-02  
Clifton & White, Copeland  
Duke Power Co., S.C.

PLAT PREPARED FOR: 164-04-01-02

**CRESCENT RESOURCES INC.**  
**BEACON SHORES**  
( PHASE II )



REF. NORTH  
DUKE POWER CO. "K"-MAPS

TRACT ON LUTHER LAND ROAD (SE-4)  
REF. D.B. 10-E/318, 413/208  
REF. P.B. (DUKE POWER K-MAP)  
TRM# 164-00-04-007

ACREAGE - AS SHOWN

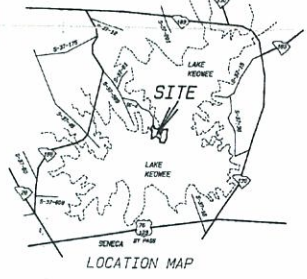
DATE: AUGUST 25, 1998

STATE OF SOUTH CAROLINA

COUNTY OF OCONEE

TOWNSHIP OF SENECA

SCALE: 1" = 100'



I HEREBY STATE THAT TO THE BEST OF MY KNOWLEDGE, INFORMATION, AND BELIEF, THE SURVEY SHOWN HEREIN WAS MADE IN ACCORDANCE WITH THE REQUIREMENTS OF THE MINIMUM STANDARDS MANUAL FOR THE PRACTICE OF LAND SURVEYING IN SOUTH CAROLINA, AND MEETS OR EXCEEDS THE REQUIREMENTS FOR A CLASS B SURVEY AS SPECIFIED THEREIN.

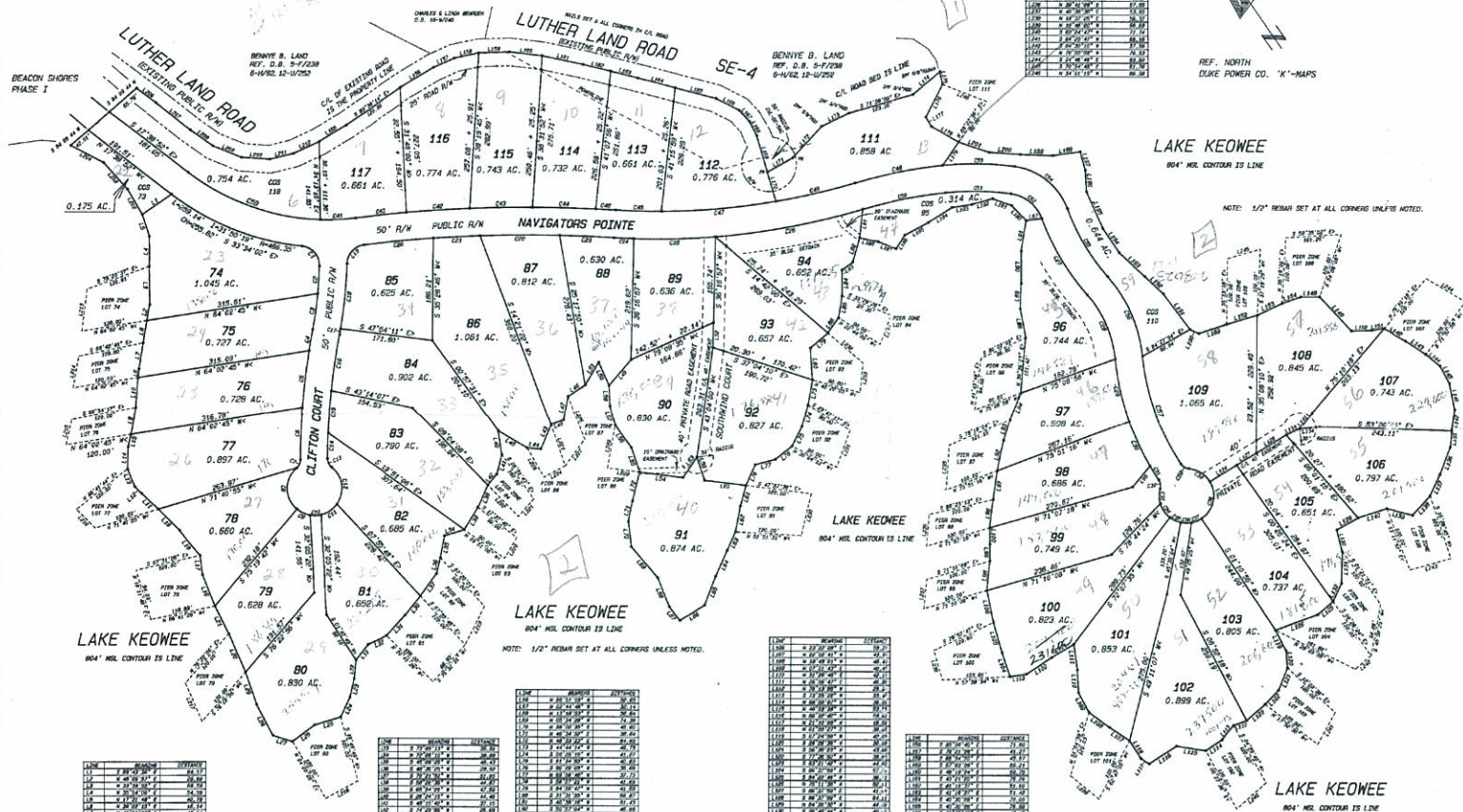
THERE ARE NO VISIBLE ENCROACHMENTS OR PROJECTIONS OTHER THAN SHOWN.

*Gregory Blake Scoble*  
S.C.

GREGORY BLAKE SCOBLE, P.L.S. # 14818  
P.O. BOX 275, SENECA, S.C. 29679-0275  
TELEPHONE (864) 882-0024



DRAWING #12-F



LOT	ACRES	OWNER	DEED	DATE	REMARKS
74	1.045	...	...	...	...
75	0.727	...	...	...	...
76	0.728	...	...	...	...
77	0.657	...	...	...	...
78	0.660	...	...	...	...
79	0.628	...	...	...	...
80	0.830	...	...	...	...

LOT	ACRES	OWNER	DEED	DATE	REMARKS
81	0.668	...	...	...	...
82	0.685	...	...	...	...
83	0.790	...	...	...	...
84	0.902	...	...	...	...
85	0.629	...	...	...	...
86	1.061	...	...	...	...
87	0.812	...	...	...	...
88	0.630	...	...	...	...
89	0.630	...	...	...	...
90	0.630	...	...	...	...
91	0.874	...	...	...	...
92	0.827	...	...	...	...
93	0.637	...	...	...	...
94	0.652	...	...	...	...
95	0.630	...	...	...	...
96	0.744	...	...	...	...
97	0.508	...	...	...	...
98	0.685	...	...	...	...
99	0.749	...	...	...	...
100	0.623	...	...	...	...
101	0.853	...	...	...	...
102	0.899	...	...	...	...
103	0.805	...	...	...	...
104	0.737	...	...	...	...
105	0.651	...	...	...	...
106	0.797	...	...	...	...
107	0.743	...	...	...	...
108	0.845	...	...	...	...
109	1.065	...	...	...	...

LOT	ACRES	OWNER	DEED	DATE	REMARKS
110	0.774	...	...	...	...
111	0.743	...	...	...	...
112	0.732	...	...	...	...
113	0.661	...	...	...	...
114	0.776	...	...	...	...
115	0.859	...	...	...	...

LOT	ACRES	OWNER	DEED	DATE	REMARKS
116	0.774	...	...	...	...
117	0.774	...	...	...	...
118	0.774	...	...	...	...
119	0.774	...	...	...	...
120	0.774	...	...	...	...
121	0.774	...	...	...	...
122	0.774	...	...	...	...
123	0.774	...	...	...	...
124	0.774	...	...	...	...
125	0.774	...	...	...	...
126	0.774	...	...	...	...
127	0.774	...	...	...	...
128	0.774	...	...	...	...
129	0.774	...	...	...	...
130	0.774	...	...	...	...
131	0.774	...	...	...	...
132	0.774	...	...	...	...
133	0.774	...	...	...	...
134	0.774	...	...	...	...
135	0.774	...	...	...	...
136	0.774	...	...	...	...
137	0.774	...	...	...	...
138	0.774	...	...	...	...
139	0.774	...	...	...	...
140	0.774	...	...	...	...
141	0.774	...	...	...	...
142	0.774	...	...	...	...
143	0.774	...	...	...	...
144	0.774	...	...	...	...
145	0.774	...	...	...	...
146	0.774	...	...	...	...
147	0.774	...	...	...	...
148	0.774	...	...	...	...
149	0.774	...	...	...	...
150	0.774	...	...	...	...
151	0.774	...	...	...	...
152	0.774	...	...	...	...
153	0.774	...	...	...	...
154	0.774	...	...	...	...
155	0.774	...	...	...	...
156	0.774	...	...	...	...
157	0.774	...	...	...	...
158	0.774	...	...	...	...
159	0.774	...	...	...	...
160	0.774	...	...	...	...
161	0.774	...	...	...	...
162	0.774	...	...	...	...
163	0.774	...	...	...	...
164	0.774	...	...	...	...
165	0.774	...	...	...	...
166	0.774	...	...	...	...
167	0.774	...	...	...	...
168	0.774	...	...	...	...
169	0.774	...	...	...	...
170	0.774	...	...	...	...
171	0.774	...	...	...	...
172	0.774	...	...	...	...
173	0.774	...	...	...	...
174	0.774	...	...	...	...
175	0.774	...	...	...	...
176	0.774	...	...	...	...
177	0.774	...	...	...	...
178	0.774	...	...	...	...
179	0.774	...	...	...	...
180	0.774	...	...	...	...
181	0.774	...	...	...	...
182	0.774	...	...	...	...
183	0.774	...	...	...	...
184	0.774	...	...	...	...
185	0.774	...	...	...	...
186	0.774	...	...	...	...
187	0.774	...	...	...	...
188	0.774	...	...	...	...
189	0.774	...	...	...	...
190	0.774	...	...	...	...
191	0.774	...	...	...	...
192	0.774	...	...	...	...
193	0.774	...	...	...	...
194	0.774	...	...	...	...
195	0.774	...	...	...	...
196	0.774	...	...	...	...
197	0.774	...	...	...	...
198	0.774	...	...	...	...
199	0.774	...	...	...	...
200	0.774	...	...	...	...

NOTE: THIS PROPERTY IS SUBJECT TO ALL EASEMENTS & R/W'S OF RECORD.

- REMARKS:
1. 5' FENCE AND UTILITY EASEMENTS ALONG ALL SIZE LOT LINES.
  2. 5' FENCE AND UTILITY EASEMENTS ALONG ALL FRONT AND REAR LOT LINES EXCEPT ALONG WATERFRONT.
  3. FENCED EASEMENTS ARE TO THE EAST - WEST CORNER.
- ADDITIONAL REMARKS:
1. FRONT SETBACKS ALONG NAVIGATORS POINT & CLIFTON DRIVE ARE 20 FEET FROM PUBLIC WAY BOUNDARY.
  2. FRONT SETBACKS ARE 25 FEET FROM SIDE OF PRIVATE ROAD EASEMENTS.
  3. SIDE SETBACKS ARE 5 FEET FROM PROPERTY LINE.
  4. REAR SETBACKS ARE 5 FEET FROM PROPERTY LINE.
  5. WATERFRONT SETBACKS ARE 5 FEET MEASURED FROM THE 804' MSL CONTOUR.
  6. MEASURED SETBACKS ALONG LUTHER LAND ROAD ARE 50' FROM CENTERLINE OF ROAD.

# THE LAKE COMPANY

LAKE KEOWEE, SC

FILED FOR RECORD  
OCONEE COUNTY  
SEP 26 1 47 PM '97

SALLIE G. SMITH  
CLERK OF COURT

PLAT PREPARED FOR:

CRESCENT RESOURCES INC.

## BEACON SHORES

(PHASE I - PLAT 1) NORTH

TRACT ON LUTHER LAND ROAD (SE-4)  
REF. D.B. 10-E/318, 413/208  
REF. P.B. (DUKE POKER K-MAP)  
TMAP# 164-00-04-007

ACREAGE - (AS SHOWN)

DATE: AUGUST 28, 1997

STATE OF SOUTH CAROLINA

COUNTY OF OCONEE

TOWNSHIP OF SENECA

SCALE: 1" = 100'

1" = 100'

1" = 100'

1" = 100'

1" = 100'

1" = 100'

1" = 100'

1" = 100'

1" = 100'

1" = 100'

1" = 100'

1" = 100'

1" = 100'

1" = 100'

1" = 100'

1" = 100'

1" = 100'

1" = 100'

1" = 100'

1" = 100'

1" = 100'

1" = 100'

1" = 100'

1" = 100'

1" = 100'

1" = 100'

1" = 100'

1" = 100'

1" = 100'

1" = 100'

1" = 100'

1" = 100'

1" = 100'

1" = 100'

1" = 100'

1" = 100'

1" = 100'

1" = 100'

1" = 100'

1" = 100'

1" = 100'

1" = 100'

1" = 100'

1" = 100'

1" = 100'

1" = 100'

1" = 100'

1" = 100'

REF. PLAT NORTH  
DUKE POKER K-MAP



LAKE KEOWEE  
804' M.S.L. CONTOUR IS PROPERTY LINE

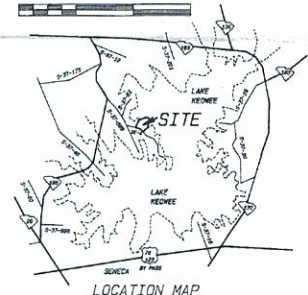
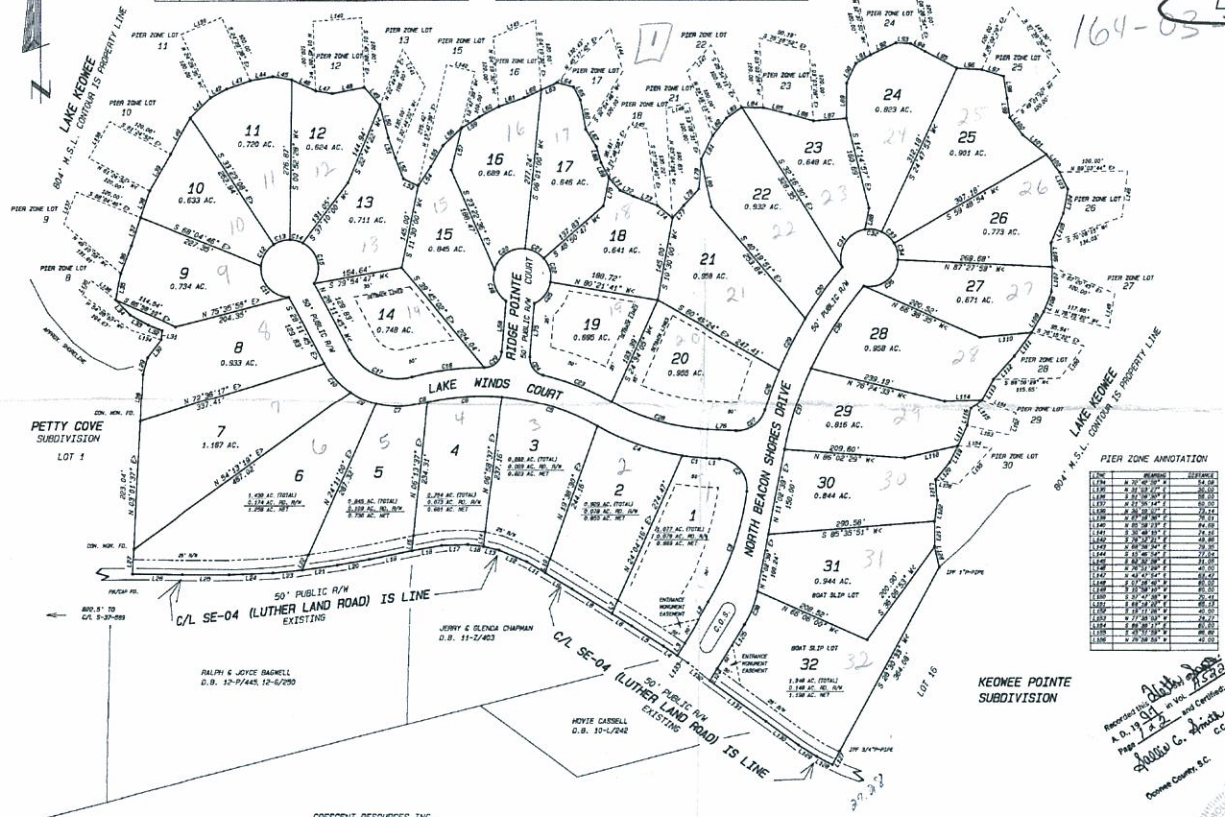
PETTY COVE  
SUBDIVISION  
LOT 1

LAKE WINDS COURT

LAKE KEOWEE  
804' M.S.L. CONTOUR IS PROPERTY LINE

LAKE KEOWEE  
804' M.S.L. CONTOUR IS PROPERTY LINE

OWNER	AC	DEPT	ANALYST	ACROSS	LENGTH	CURVE	BEARING
L1	48.30	08/10/97	423.84	45.48	3.24214491	1	112.00
L2	48.30	08/10/97	423.84	45.48	3.24214491	1	112.00
L3	254.89	08/10/97	423.84	74.78	3.18421731	1	112.00
L4	254.89	08/10/97	423.84	74.78	3.18421731	1	112.00
L5	170.89	08/10/97	423.84	124.82	3.20202020	1	112.00
L6	170.89	08/10/97	423.84	124.82	3.20202020	1	112.00
L7	254.89	08/10/97	423.84	74.78	3.18421731	1	112.00
L8	254.89	08/10/97	423.84	74.78	3.18421731	1	112.00
L9	254.89	08/10/97	423.84	74.78	3.18421731	1	112.00
L10	254.89	08/10/97	423.84	74.78	3.18421731	1	112.00
L11	254.89	08/10/97	423.84	74.78	3.18421731	1	112.00
L12	254.89	08/10/97	423.84	74.78	3.18421731	1	112.00
L13	254.89	08/10/97	423.84	74.78	3.18421731	1	112.00
L14	254.89	08/10/97	423.84	74.78	3.18421731	1	112.00
L15	254.89	08/10/97	423.84	74.78	3.18421731	1	112.00
L16	254.89	08/10/97	423.84	74.78	3.18421731	1	112.00
L17	254.89	08/10/97	423.84	74.78	3.18421731	1	112.00
L18	254.89	08/10/97	423.84	74.78	3.18421731	1	112.00
L19	254.89	08/10/97	423.84	74.78	3.18421731	1	112.00
L20	254.89	08/10/97	423.84	74.78	3.18421731	1	112.00
L21	254.89	08/10/97	423.84	74.78	3.18421731	1	112.00
L22	254.89	08/10/97	423.84	74.78	3.18421731	1	112.00
L23	254.89	08/10/97	423.84	74.78	3.18421731	1	112.00
L24	254.89	08/10/97	423.84	74.78	3.18421731	1	112.00
L25	254.89	08/10/97	423.84	74.78	3.18421731	1	112.00
L26	254.89	08/10/97	423.84	74.78	3.18421731	1	112.00
L27	254.89	08/10/97	423.84	74.78	3.18421731	1	112.00
L28	254.89	08/10/97	423.84	74.78	3.18421731	1	112.00
L29	254.89	08/10/97	423.84	74.78	3.18421731	1	112.00
L30	254.89	08/10/97	423.84	74.78	3.18421731	1	112.00
L31	254.89	08/10/97	423.84	74.78	3.18421731	1	112.00
L32	254.89	08/10/97	423.84	74.78	3.18421731	1	112.00
L33	254.89	08/10/97	423.84	74.78	3.18421731	1	112.00
L34	254.89	08/10/97	423.84	74.78	3.18421731	1	112.00
L35	254.89	08/10/97	423.84	74.78	3.18421731	1	112.00
L36	254.89	08/10/97	423.84	74.78	3.18421731	1	112.00
L37	254.89	08/10/97	423.84	74.78	3.18421731	1	112.00
L38	254.89	08/10/97	423.84	74.78	3.18421731	1	112.00
L39	254.89	08/10/97	423.84	74.78	3.18421731	1	112.00
L40	254.89	08/10/97	423.84	74.78	3.18421731	1	112.00
L41	254.89	08/10/97	423.84	74.78	3.18421731	1	112.00
L42	254.89	08/10/97	423.84	74.78	3.18421731	1	112.00
L43	254.89	08/10/97	423.84	74.78	3.18421731	1	112.00
L44	254.89	08/10/97	423.84	74.78	3.18421731	1	112.00
L45	254.89	08/10/97	423.84	74.78	3.18421731	1	112.00
L46	254.89	08/10/97	423.84	74.78	3.18421731	1	112.00
L47	254.89	08/10/97	423.84	74.78	3.18421731	1	112.00
L48	254.89	08/10/97	423.84	74.78	3.18421731	1	112.00
L49	254.89	08/10/97	423.84	74.78	3.18421731	1	112.00
L50	254.89	08/10/97	423.84	74.78	3.18421731	1	112.00
L51	254.89	08/10/97	423.84	74.78	3.18421731	1	112.00
L52	254.89	08/10/97	423.84	74.78	3.18421731	1	112.00
L53	254.89	08/10/97	423.84	74.78	3.18421731	1	112.00
L54	254.89	08/10/97	423.84	74.78	3.18421731	1	112.00
L55	254.89	08/10/97	423.84	74.78	3.18421731	1	112.00
L56	254.89	08/10/97	423.84	74.78	3.18421731	1	112.00
L57	254.89	08/10/97	423.84	74.78	3.18421731	1	112.00
L58	254.89	08/10/97	423.84	74.78	3.18421731	1	112.00
L59	254.89	08/10/97	423.84	74.78	3.18421731	1	112.00
L60	254.89	08/10/97	423.84	74.78	3.18421731	1	112.00
L61	254.89	08/10/97	423.84	74.78	3.18421731	1	112.00
L62	254.89	08/10/97	423.84	74.78	3.18421731	1	112.00
L63	254.89	08/10/97	423.84	74.78	3.18421731	1	112.00
L64	254.89	08/10/97	423.84	74.78	3.18421731	1	112.00
L65	254.89	08/10/97	423.84	74.78	3.18421731	1	112.00
L66	254.89	08/10/97	423.84	74.78	3.18421731	1	112.00
L67	254.89	08/10/97	423.84	74.78	3.18421731	1	112.00
L68	254.89	08/10/97	423.84	74.78	3.18421731	1	112.00
L69	254.89	08/10/97	423.84	74.78	3.18421731	1	112.00
L70	254.89	08/10/97	423.84	74.78	3.18421731	1	112.00
L71	254.89	08/10/97	423.84	74.78	3.18421731	1	112.00
L72	254.89	08/10/97	423.84	74.78	3.18421731	1	112.00
L73	254.89	08/10/97	423.84	74.78	3.18421731	1	112.00
L74	254.89	08/10/97	423.84	74.78	3.18421731	1	112.00
L75	254.89	08/10/97	423.84	74.78	3.18421731	1	112.00
L76	254.89	08/10/97	423.84	74.78	3.18421731	1	112.00
L77	254.89	08/10/97	423.84	74.78	3.18421731	1	112.00
L78	254.89	08/10/97	423.84	74.78	3.18421731	1	112.00
L79	254.89	08/10/97	423.84	74.78	3.18421731	1	112.00
L80	254.89	08/10/97	423.84	74.78	3.18421731	1	112.00
L81	254.89	08/10/97	423.84	74.78	3.18421731	1	112.00
L82	254.89	08/10/97	423.84	74.78	3.18421731	1	112.00
L83	254.89	08/10/97	423.84	74.78	3.18421731	1	112.00
L84	254.89	08/10/97	423.84	74.78	3.18421731	1	112.00
L85	254.89	08/10/97	423.84	74.78	3.18421731	1	112.00
L86	254.89	08/10/97	423.84	74.78	3.18421731	1	112.00
L87	254.89	08/10/97	423.84	74.78	3.18421731	1	112.00
L88	254.89	08/10/97	423.84	74.78	3.18421731	1	112.00
L89	254.89	08/10/97	423.84	74.78	3.18421731	1	112.00
L90	254.89	08/10/97	423.84	74.78	3.18421731	1	112.00
L91	254.89	08/10/97	423.84	74.78	3.18421731	1	112.00
L92	254.89	08/10/97	423.84	74.78	3.18421731	1	112.00
L93	254.89	08/10/97	423.84	74.78	3.18421731	1	112.00
L94	254.89	08/10/97	423.84	74.78	3.18421731	1	112.00
L95	254.89	08/10/97	423.84	74.78	3.18421731	1	112.00
L96	254.89	08/10/97	423.84	74.78	3.18421731	1	112.00
L97	254.89	08/10/97	423.84	74.78	3.18421731	1	112.00
L98	254.89	08/10/97	423.84	74.78	3.18421731	1	112.00
L99	254.89	08/10/97	423.84	74.78	3.18421731	1	112.00
L100	254.89	08/10/97	423.84	74.78	3.18421731	1	112.00



I HEREBY STATE THAT TO THE BEST OF MY KNOWLEDGE, INFORMATION, AND BELIEF, THE SURVEY SHOWN HEREIN WAS MADE IN ACCORDANCE WITH THE REQUIREMENTS OF THE MINIMUM STANDARDS MANUAL FOR THE PRACTICE OF LAND SURVEYING IN SOUTH CAROLINA, AND MEETS