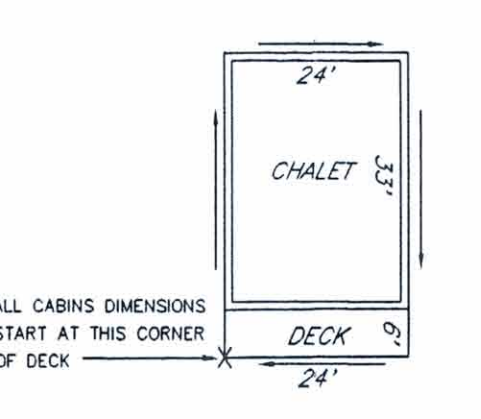
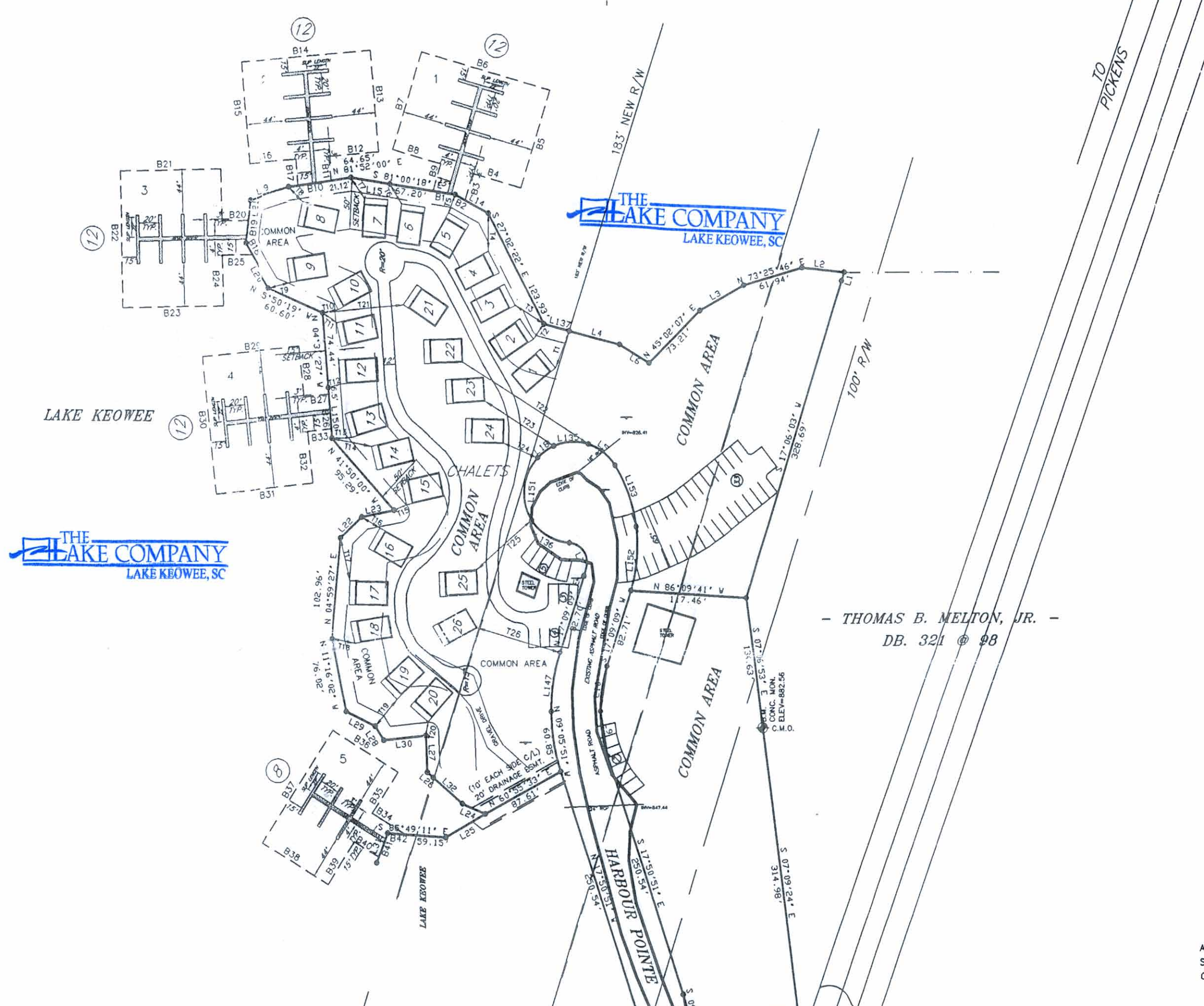


CLUSTER #1	14,771 S.F.	0.34 AC.
CLUSTER #2	14,732 S.F.	0.34 AC.
CLUSTER #3	14,776 S.F.	0.34 AC.
CLUSTER #4	14,722 S.F.	0.34 AC.
CLUSTER #5	11,539 S.F.	0.26 AC.
<b>TOTAL</b>	<b>70,540 S.F.</b>	<b>1.62 AC.</b>

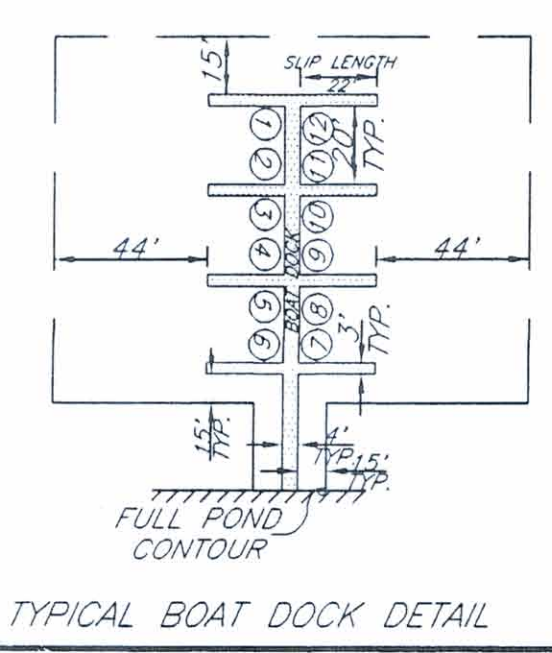
CLUSTER #1			CLUSTER #2			CLUSTER #3			CLUSTER #4			CLUSTER #5		
LINE	DIRECTION	DISTANCE	LINE	DIRECTION	DISTANCE	LINE	DIRECTION	DISTANCE	LINE	DIRECTION	DISTANCE	LINE	DIRECTION	DISTANCE
B1	N 81°00'18" W	23.00	B20	N 01°22'48" W	146.00	L1	S 17°14'37" E	9.00	L80	S 83°41'38" E	43.12	L49	S 83°41'38" E	43.12
B2	N 81°00'18" W	11.43	B21	N 88°33'29" E	102.00	L2	S 83°41'38" E	43.12	L81	N 88°21'09" E	29.00	L50	S 83°41'38" E	43.12
B3	N 81°00'18" W	27.50	B22	N 88°33'29" E	52.50	L3	S 83°41'38" E	43.12	L82	N 88°21'09" E	29.00	L51	S 83°41'38" E	43.12
B4	S 16°23'55" W	101.00	B23	S 88°33'29" E	30.50	L4	S 83°41'38" E	43.12	L83	N 88°21'09" E	29.00	L52	S 83°41'38" E	43.12
B5	S 16°23'55" W	101.00	B24	S 88°33'29" E	30.50	L5	S 83°41'38" E	43.12	L84	S 80°26'20" E	21.01	L53	S 83°41'38" E	43.12
B6	S 16°23'55" W	101.00	B25	S 04°31'24" E	85.00	L6	S 83°41'38" E	43.12	L85	N 88°21'09" E	29.00	L54	S 83°41'38" E	43.12
B7	S 16°23'55" W	101.00	B26	S 04°31'24" E	24.40	L7	N 24°38'17" W	35.31	L86	N 88°21'09" E	29.00	L55	S 83°41'38" E	43.12
B8	S 16°23'55" W	101.00	B27	N 00°00'00" W	102.00	L8	N 88°21'09" E	29.00	L87	N 88°21'09" E	29.00	L56	S 83°41'38" E	43.12
B9	S 16°23'55" W	101.00	B28	N 83°58'55" E	162.00	L9	S 83°41'38" E	43.12	L88	N 88°21'09" E	29.00	L57	S 83°41'38" E	43.12
B10	S 16°23'55" W	101.00	B29	N 83°58'55" E	162.00	L10	S 83°41'38" E	43.12	L89	N 88°21'09" E	29.00	L58	S 83°41'38" E	43.12
B11	N 04°58'36" W	24.36	B30	N 05°00'00" W	21.00	L11	N 88°21'09" E	29.00	L90	N 88°21'09" E	29.00	L59	S 83°41'38" E	43.12
B12	N 04°58'36" W	24.36	B31	S 83°58'55" E	162.00	L12	N 88°21'09" E	29.00	L91	S 83°41'38" E	43.12	L60	S 83°41'38" E	43.12
B13	N 04°58'36" W	102.00	B32	N 05°00'00" W	17.00	L13	S 83°41'38" E	43.12	L92	N 88°21'09" E	29.00	L61	S 83°41'38" E	43.12
B14	N 05°00'00" W	130.00	B33	N 05°00'00" W	17.00	L14	S 83°41'38" E	43.12	L93	N 88°21'09" E	29.00	L62	S 83°41'38" E	43.12
B15	S 04°58'36" E	102.00	B34	N 05°00'00" W	17.00	L15	S 83°41'38" E	43.12	L94	N 88°21'09" E	29.00	L63	S 83°41'38" E	43.12
B16	S 04°58'36" E	102.00	B35	S 07°48'04" E	42.00	L16	S 83°41'38" E	43.12	L95	N 88°21'09" E	29.00	L64	S 83°41'38" E	43.12
B17	N 85°00'24" E	31.00	B36	N 07°48'04" E	42.00	L17	S 83°41'38" E	43.12	L96	N 88°21'09" E	29.00	L65	S 83°41'38" E	43.12
B18	N 85°00'24" E	31.00	B37	N 07°48'04" E	42.00	L18	S 83°41'38" E	43.12	L97	N 88°21'09" E	29.00	L66	S 83°41'38" E	43.12
B19	S 20°23'22" E	12.98	B38	N 07°48'04" E	42.00	L19	N 78°48'08" E	45.03	L98	N 88°21'09" E	29.00	L67	S 83°41'38" E	43.12
B20	S 20°23'22" E	12.98	B39	N 07°48'04" E	42.00	L20	N 78°48'08" E	45.03	L99	N 88°21'09" E	29.00	L68	S 83°41'38" E	43.12
B21	N 88°33'22" E	102.00	B40	S 20°23'22" E	25.79	L21	N 78°48'08" E	45.03	L100	N 88°21'09" E	29.00	L69	S 83°41'38" E	43.12
			B41	S 20°23'22" E	25.79	L22	N 78°48'08" E	45.03	L101	N 88°21'09" E	29.00	L70	S 83°41'38" E	43.12
			B42	N 85°42'11" W	18.72	L23	N 78°48'08" E	45.03	L102	N 88°21'09" E	29.00	L71	S 83°41'38" E	43.12

56 TOTAL SLIPS  
26 CABINS



LINE	DIRECTION	DISTANCE	LINE	DIRECTION	DISTANCE
11	N 20°30'24" E	39.22	119	S 83°41'38" E	43.12
12	S 20°30'24" W	18.00	120	S 83°41'38" E	43.12
13	N 57°40'11" W	34.33	121	S 83°41'38" E	43.12
14	S 02°31'24" E	37.54	122	S 83°41'38" E	43.12
15	S 20°30'24" W	18.00	123	S 83°41'38" E	43.12
16	S 13°53'05" E	22.88	124	S 83°41'38" E	43.12
17	S 31°24'55" E	24.16	125	S 83°41'38" E	43.12
18	S 44°34'06" E	20.34	126	S 83°41'38" E	43.12
19	N 78°54'00" W	23.29	127	S 83°41'38" E	43.12
110	N 78°54'00" W	16.78	128	S 83°41'38" E	43.12
111	S 83°41'38" E	43.12	129	S 83°41'38" E	43.12
112	N 78°54'00" W	15.24	130	S 83°41'38" E	43.12
113	N 88°33'22" E	20.13	131	S 83°41'38" E	43.12
114	S 78°54'00" W	41.51	132	S 83°41'38" E	43.12
115	N 88°33'22" E	13.88	133	S 83°41'38" E	43.12
116	N 88°33'22" E	21.58	134	S 83°41'38" E	43.12
117	S 19°23'22" E	43.69	135	S 83°41'38" E	43.12
118	S 83°41'38" E	43.12	136	S 83°41'38" E	43.12
119	S 83°41'38" E	43.12	137	S 83°41'38" E	43.12
120	N 05°00'00" W	13.50	138	S 83°41'38" E	43.12
121	N 85°00'24" E	76.19	139	S 83°41'38" E	43.12
122	N 78°54'00" W	151.44	140	S 83°41'38" E	43.12
123	N 03°00'41" W	24.00	141	S 83°41'38" E	43.12
124	N 87°02'28" E	88.74	142	S 83°41'38" E	43.12
125	S 83°41'38" E	43.12	143	S 83°41'38" E	43.12
126	S 83°41'38" E	43.12	144	S 83°41'38" E	43.12
127	S 83°41'38" E	43.12	145	S 83°41'38" E	43.12
128	S 83°41'38" E	43.12	146	S 83°41'38" E	43.12
129	S 83°41'38" E	43.12	147	S 83°41'38" E	43.12
130	N 78°54'00" W	87.00	148	S 83°41'38" E	43.12

CABIN #1		CABIN #2	
DIRECTION	DISTANCE	DIRECTION	DISTANCE
N 80°00'04" E	30.00	N 85°17'15" E	39.00
S 80°58'36" E	24.00	S 84°00'45" E	24.00
S 80°00'04" W	24.00	S 85°17'15" W	39.00
N 89°52'56" W	24.00	N 84°02'45" W	24.00



I hereby state that to the best of my knowledge, information and belief, the survey shown hereon was made in accordance with the requirements of the Minimum Standards Manual for the Practice of Land Surveying in South Carolina and meets or exceeds the requirements for a Class 'B' survey as specified therein.

ROBERT R. SPEARMAN  
Professional Land Surveyor # 3615  
412 E. Main Street  
Pickens, South Carolina 29681  
Phone: (803) 656-6200

- NOTES:
- All property lines along Lake Keowee follow the 804' contour.
  - All new streets have a width of 50' and all cul-de-sacs have a radius of 50', unless otherwise noted.
  - Reference Plat Book 13B @ 801.
  - Survey by Robert R. Spearman #3615
  - No wastewater discharge from watercraft or structures.
  - All construction shall be in compliance with Duke Power Shoreline Management Guidelines and Pickens County Development Standards Drainage.
  - All cabins and clusters are computed and taken from a plat by Beeson Engineering Co. dated 3/25/98.

FINAL PLAT  
**HARBOUR POINTE**  
PICKENS COUNTY SOUTH CAROLINA  
APRIL 24, 1997 SCALE: 1" = 100'  
REVISED 06-21-99  
GRAPHIC SCALE  
(IN FEET)  
1 inch = 100 ft.