

PLAT # 0 2023
 BOOK # 0 12002 BANK OFFICER
 11 & 001 PG 9 2023 PG

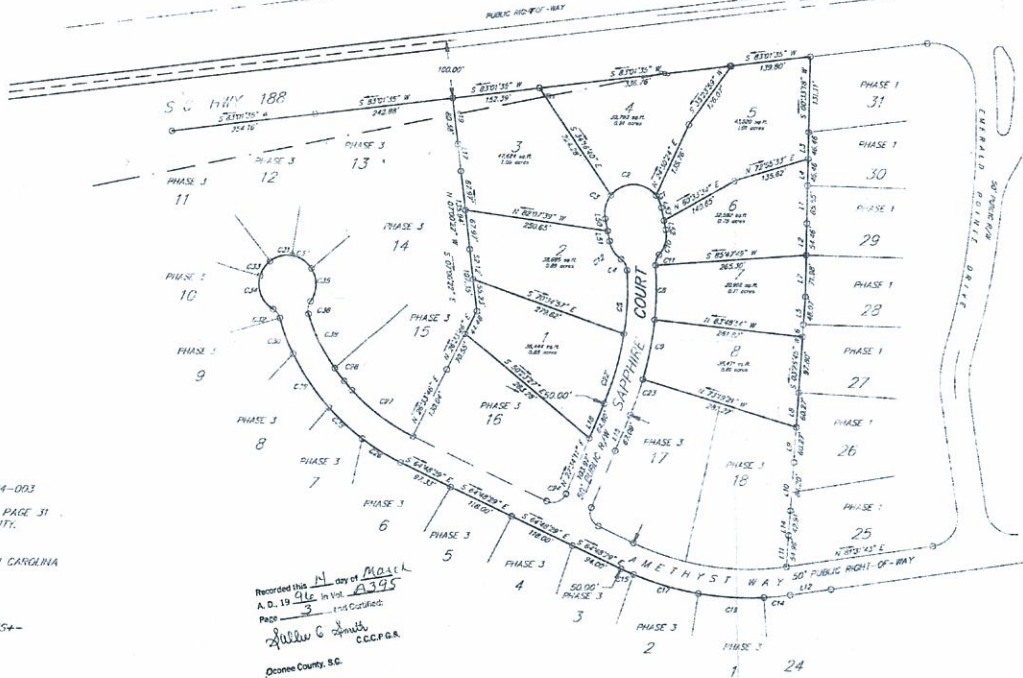
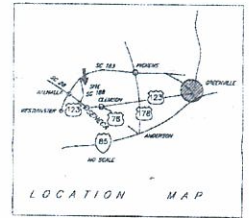
SC OFF HIGHWAY



THE LAKE COMPANY
 LAKE KEOWEE, SC

EMERALD POINTE IV

South



DESCRIPTION: TWP 193-00-04-003
 REFERENCE PLAT
 RECORDED IN PLAT BOOK W PAGE 31
 RECORDS OF OCONEE COUNTY.

LOCATION: STATE OF SOUTH CAROLINA
 COUNTY OF OCONEE
 TOWNSHIP OF WAGENER
 CITY OF

AREA OF PARCEL: 1.70 ACRES+-

DATE: SEPTEMBER 9, 1994

Recorded this 14 day of March
 A. D. 1995 in Vol. 3395
 Page 9
 Sallee G. Smith, OCCPGA
 Oconee County, SC

PLAT PREPARED FOR:

CRESCENT RESOURCES, INC

COPYING PERMITTED BY THE STATE OF SOUTH CAROLINA
 121 WEST BROADWAY, 12TH FLOOR
 COLUMBIA, SOUTH CAROLINA 29201
 SOURCE: SC 20020
 M. H. HARRISON, P.E.
 ARCHITECT, ENGINEER, P.L.L.C.

SALLEE G. SMITH
 CLERK OF COURT
 121 W. BROADWAY
 COLUMBIA, SC 29201

LINE	PHASE	LENGTH	BEARING	DETAILS
01	PHASE 3	241.79	S 21°13' W	1/4 SECTION 18
02	PHASE 3	250.00	S 21°13' W	1/4 SECTION 18
03	PHASE 3	250.00	S 21°13' W	1/4 SECTION 18
04	PHASE 3	250.00	S 21°13' W	1/4 SECTION 18
05	PHASE 3	250.00	S 21°13' W	1/4 SECTION 18
06	PHASE 3	250.00	S 21°13' W	1/4 SECTION 18
07	PHASE 3	250.00	S 21°13' W	1/4 SECTION 18
08	PHASE 3	250.00	S 21°13' W	1/4 SECTION 18
09	PHASE 3	250.00	S 21°13' W	1/4 SECTION 18
10	PHASE 3	250.00	S 21°13' W	1/4 SECTION 18
11	PHASE 3	250.00	S 21°13' W	1/4 SECTION 18
12	PHASE 3	250.00	S 21°13' W	1/4 SECTION 18
13	PHASE 3	250.00	S 21°13' W	1/4 SECTION 18
14	PHASE 3	250.00	S 21°13' W	1/4 SECTION 18
15	PHASE 3	250.00	S 21°13' W	1/4 SECTION 18
16	PHASE 3	250.00	S 21°13' W	1/4 SECTION 18
17	PHASE 3	250.00	S 21°13' W	1/4 SECTION 18
18	PHASE 3	250.00	S 21°13' W	1/4 SECTION 18
19	PHASE 3	250.00	S 21°13' W	1/4 SECTION 18
20	PHASE 3	250.00	S 21°13' W	1/4 SECTION 18
21	PHASE 3	250.00	S 21°13' W	1/4 SECTION 18
22	PHASE 3	250.00	S 21°13' W	1/4 SECTION 18
23	PHASE 3	250.00	S 21°13' W	1/4 SECTION 18
24	PHASE 3	250.00	S 21°13' W	1/4 SECTION 18
25	PHASE 3	250.00	S 21°13' W	1/4 SECTION 18
26	PHASE 3	250.00	S 21°13' W	1/4 SECTION 18
27	PHASE 3	250.00	S 21°13' W	1/4 SECTION 18
28	PHASE 3	250.00	S 21°13' W	1/4 SECTION 18
29	PHASE 3	250.00	S 21°13' W	1/4 SECTION 18
30	PHASE 3	250.00	S 21°13' W	1/4 SECTION 18
31	PHASE 3	250.00	S 21°13' W	1/4 SECTION 18

LINE	PHASE	LENGTH	BEARING	DETAILS
01	PHASE 3	250.00	S 21°13' W	1/4 SECTION 18
02	PHASE 3	250.00	S 21°13' W	1/4 SECTION 18
03	PHASE 3	250.00	S 21°13' W	1/4 SECTION 18
04	PHASE 3	250.00	S 21°13' W	1/4 SECTION 18
05	PHASE 3	250.00	S 21°13' W	1/4 SECTION 18
06	PHASE 3	250.00	S 21°13' W	1/4 SECTION 18
07	PHASE 3	250.00	S 21°13' W	1/4 SECTION 18
08	PHASE 3	250.00	S 21°13' W	1/4 SECTION 18
09	PHASE 3	250.00	S 21°13' W	1/4 SECTION 18
10	PHASE 3	250.00	S 21°13' W	1/4 SECTION 18
11	PHASE 3	250.00	S 21°13' W	1/4 SECTION 18
12	PHASE 3	250.00	S 21°13' W	1/4 SECTION 18
13	PHASE 3	250.00	S 21°13' W	1/4 SECTION 18
14	PHASE 3	250.00	S 21°13' W	1/4 SECTION 18
15	PHASE 3	250.00	S 21°13' W	1/4 SECTION 18
16	PHASE 3	250.00	S 21°13' W	1/4 SECTION 18
17	PHASE 3	250.00	S 21°13' W	1/4 SECTION 18
18	PHASE 3	250.00	S 21°13' W	1/4 SECTION 18
19	PHASE 3	250.00	S 21°13' W	1/4 SECTION 18
20	PHASE 3	250.00	S 21°13' W	1/4 SECTION 18
21	PHASE 3	250.00	S 21°13' W	1/4 SECTION 18
22	PHASE 3	250.00	S 21°13' W	1/4 SECTION 18
23	PHASE 3	250.00	S 21°13' W	1/4 SECTION 18
24	PHASE 3	250.00	S 21°13' W	1/4 SECTION 18



NOTES:
 25' BACKSLOPE (UNLESS OTHERWISE DENOTED ON PLAT)
 FRONT SET BACKS ARE 50'
 SIDE SET BACKS ARE 10'
 REAR SET BACK ON INTERIOR LOTS IS 35'
 LAKEFRONT SET BACK IS 50'
 EASEMENTS:
 5' DRAINAGE AND UTILITY EASEMENT ALONG ALL SIDE LOT LINES
 10' DRAINAGE AND UTILITY EASEMENTS ALONG ALL FRONT AND REAR LOT LINES
 FLOOD EASEMENT TAKEN TO 810 MSL CONTOUR
 LAKE SHORELINE BOUNDARY FALLS ON OR ABOVE 804 MSL CONTOUR

ACCEPTED FOR OCONEE COUNTY BY
 M. H. HARRISON
 ARCHITECT, ENGINEER, P.L.L.C.

M. H. HARRISON
 C.A. # 00494

002774

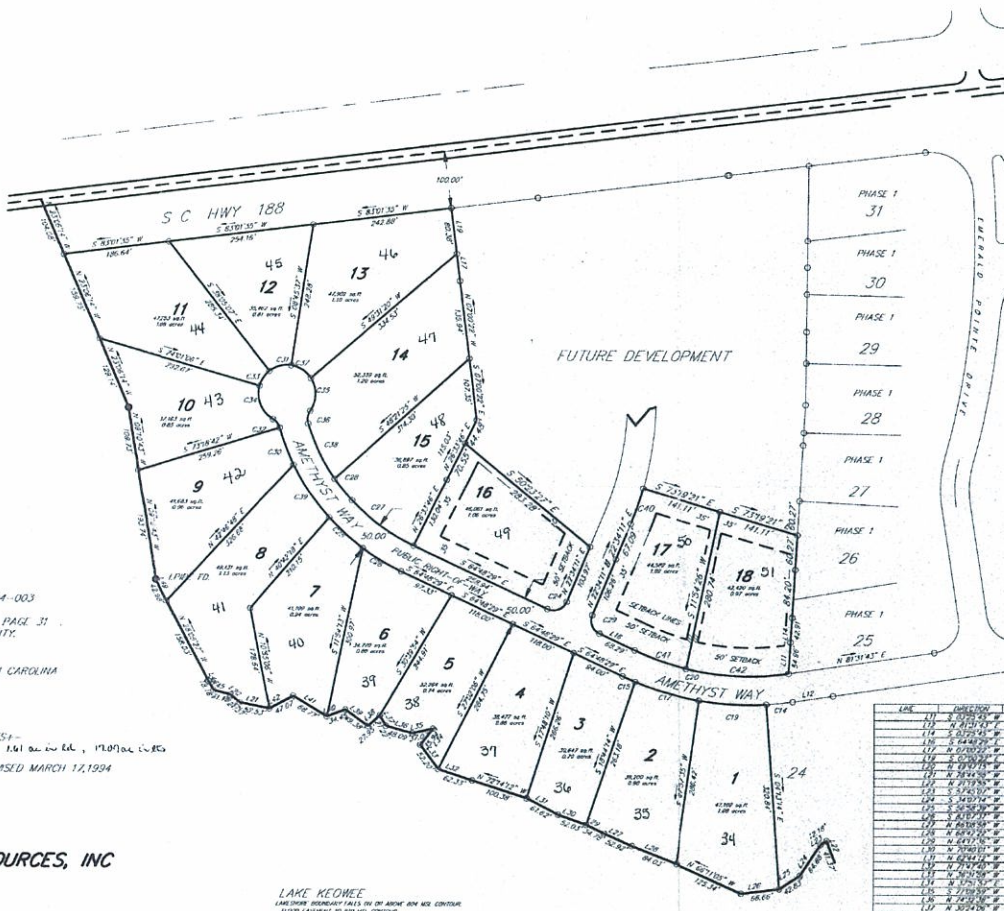
FILED FOR RECORD
OCCOKEE COUNTY
S.C.
MAY 21 4 53 PM '94
SALLI
CLERK OF

193

21 DAY OF
94 In Vol. 8256
I and Certified
C. Smith
CCC PGS
OCCOKEE COUNTY, S.C.

Emerald Pointe III

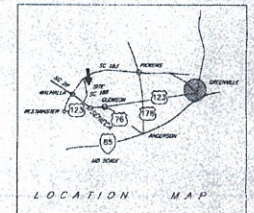
S.C. COUNTY RECORD



EMERALD POINTE III

SECTION THREE OF EMERALD POINTE.

South



DESCRIPTION: TWP 19.3-00-04-003
REFERENCE PLAT
RECORDED IN PLAT BOOK W PAGE 31
RECORDS OF OCCOKEE COUNTY.

LOCATION: STATE OF SOUTH CAROLINA
COUNTY OF OCCOKEE
TOWNSHIP OF WAGNER
CITY OF

AREA OF PARCEL: 16.68 ACRES ±
1.61 ac. in lot 1, 15.07 ac. in lots
DATE: NOVEMBER 1, 1993, REVISED MARCH 17, 1994

PLAT PREPARED FOR:

CRESCENT RESOURCES, INC

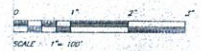
LAKE KEOWEE
LAKE SHORE BOUNDARY FALLS ON 80' ABOVE 804 MSL CONTOUR
FLOOD EASEMENT TO 810 MSL CONTOUR

LINE	DIRECTION	DISTANCE	CURV	RADIUS	LENGTH	CHORD	BEARING
1.1	N 71° 15' 00" E	14.38			14.38	14.38	S 18° 45' 00" W
1.2	N 71° 15' 00" E	14.38			14.38	14.38	S 18° 45' 00" W
1.3	N 71° 15' 00" E	14.38			14.38	14.38	S 18° 45' 00" W
1.4	N 71° 15' 00" E	14.38			14.38	14.38	S 18° 45' 00" W
1.5	N 71° 15' 00" E	14.38			14.38	14.38	S 18° 45' 00" W
1.6	N 71° 15' 00" E	14.38			14.38	14.38	S 18° 45' 00" W
1.7	N 71° 15' 00" E	14.38			14.38	14.38	S 18° 45' 00" W
1.8	N 71° 15' 00" E	14.38			14.38	14.38	S 18° 45' 00" W
1.9	N 71° 15' 00" E	14.38			14.38	14.38	S 18° 45' 00" W
1.10	N 71° 15' 00" E	14.38			14.38	14.38	S 18° 45' 00" W
1.11	N 71° 15' 00" E	14.38			14.38	14.38	S 18° 45' 00" W
1.12	N 71° 15' 00" E	14.38			14.38	14.38	S 18° 45' 00" W
1.13	N 71° 15' 00" E	14.38			14.38	14.38	S 18° 45' 00" W
1.14	N 71° 15' 00" E	14.38			14.38	14.38	S 18° 45' 00" W
1.15	N 71° 15' 00" E	14.38			14.38	14.38	S 18° 45' 00" W
1.16	N 71° 15' 00" E	14.38			14.38	14.38	S 18° 45' 00" W
1.17	N 71° 15' 00" E	14.38			14.38	14.38	S 18° 45' 00" W
1.18	N 71° 15' 00" E	14.38			14.38	14.38	S 18° 45' 00" W
1.19	N 71° 15' 00" E	14.38			14.38	14.38	S 18° 45' 00" W
1.20	N 71° 15' 00" E	14.38			14.38	14.38	S 18° 45' 00" W
1.21	N 71° 15' 00" E	14.38			14.38	14.38	S 18° 45' 00" W
1.22	N 71° 15' 00" E	14.38			14.38	14.38	S 18° 45' 00" W
1.23	N 71° 15' 00" E	14.38			14.38	14.38	S 18° 45' 00" W
1.24	N 71° 15' 00" E	14.38			14.38	14.38	S 18° 45' 00" W
1.25	N 71° 15' 00" E	14.38			14.38	14.38	S 18° 45' 00" W
1.26	N 71° 15' 00" E	14.38			14.38	14.38	S 18° 45' 00" W
1.27	N 71° 15' 00" E	14.38			14.38	14.38	S 18° 45' 00" W
1.28	N 71° 15' 00" E	14.38			14.38	14.38	S 18° 45' 00" W
1.29	N 71° 15' 00" E	14.38			14.38	14.38	S 18° 45' 00" W
1.30	N 71° 15' 00" E	14.38			14.38	14.38	S 18° 45' 00" W
1.31	N 71° 15' 00" E	14.38			14.38	14.38	S 18° 45' 00" W
1.32	N 71° 15' 00" E	14.38			14.38	14.38	S 18° 45' 00" W
1.33	N 71° 15' 00" E	14.38			14.38	14.38	S 18° 45' 00" W
1.34	N 71° 15' 00" E	14.38			14.38	14.38	S 18° 45' 00" W
1.35	N 71° 15' 00" E	14.38			14.38	14.38	S 18° 45' 00" W
1.36	N 71° 15' 00" E	14.38			14.38	14.38	S 18° 45' 00" W
1.37	N 71° 15' 00" E	14.38			14.38	14.38	S 18° 45' 00" W
1.38	N 71° 15' 00" E	14.38			14.38	14.38	S 18° 45' 00" W
1.39	N 71° 15' 00" E	14.38			14.38	14.38	S 18° 45' 00" W
1.40	N 71° 15' 00" E	14.38			14.38	14.38	S 18° 45' 00" W
1.41	N 71° 15' 00" E	14.38			14.38	14.38	S 18° 45' 00" W
1.42	N 71° 15' 00" E	14.38			14.38	14.38	S 18° 45' 00" W
1.43	N 71° 15' 00" E	14.38			14.38	14.38	S 18° 45' 00" W
1.44	N 71° 15' 00" E	14.38			14.38	14.38	S 18° 45' 00" W
1.45	N 71° 15' 00" E	14.38			14.38	14.38	S 18° 45' 00" W
1.46	N 71° 15' 00" E	14.38			14.38	14.38	S 18° 45' 00" W
1.47	N 71° 15' 00" E	14.38			14.38	14.38	S 18° 45' 00" W
1.48	N 71° 15' 00" E	14.38			14.38	14.38	S 18° 45' 00" W
1.49	N 71° 15' 00" E	14.38			14.38	14.38	S 18° 45' 00" W
1.50	N 71° 15' 00" E	14.38			14.38	14.38	S 18° 45' 00" W

NOTES:
SETBACKS:
CORNERS OTHERWISE DENOTED ON PLAT
FRONT SETBACKS ARE 50'
SIDE SETBACKS ARE 10'
REAR SETBACKS ON INTERIOR LOTS IS 35'
EASEMENTS:
5' DRAINAGE AND UTILITY EASEMENT ALONG ALL SIDE LOT LINES
10' DRAINAGE AND UTILITY EASEMENTS ALONG ALL FRONT AND REAR LOT LINES
FLOOD EASEMENT TAKEN TO 810 MSL CONTOUR
LAKE SHORELINE BOUNDARY FALLS ON OR ABOVE 804 MSL CONTOUR

CONTRACTORS OF SENECA, INC
1211 EAST NORTH 1ST STREET
ITALA, MISSISSIPPI
SENECA, SC 29629
PHONE: 803-542-8474
Michael R. Henderson
MICHAEL E. HENDERSON, PLS 65846

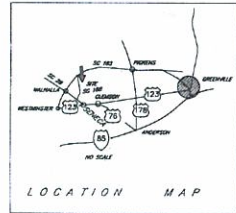
I HEREBY CERTIFY THAT TO THE BEST OF MY KNOWLEDGE AND BELIEF, THE PLAT IS CORRECT AND TRULY REPRESENTS THE ACTUAL SITUATION ON THE GROUND AND THAT I AM A PROFESSIONAL SURVEYOR AND AM LICENSED AS SUCH IN THE STATE OF SOUTH CAROLINA. I HAVE NOT BEEN AFFECTED BY ANY INTERESTED PARTY UNLESS I HAVE BEEN SO ADVISED BY THE RECORDS AND I HAVE MADE THE NECESSARY CORRECTIONS TO THE RECORDS.
MICHAEL E. HENDERSON, PLS 65846



EMERALD POINTE II

NORTH

THE LAKE COMPANY
LAKE KEOWEE, SC



PLAT # 193-00
DATE: 11/17/93
PREPARED BY: CRESCENT RESOURCES, INC.

SC COND NORTH



CHAIN	BEARING	LENGTH	COORDINATES	REMARKS
C01	S 89°50'20" W	194.00'
C02	S 89°50'20" W	194.00'
C03	S 89°50'20" W	194.00'
C04	S 89°50'20" W	194.00'
C05	S 89°50'20" W	194.00'
C06	S 89°50'20" W	194.00'
C07	S 89°50'20" W	194.00'
C08	S 89°50'20" W	194.00'
C09	S 89°50'20" W	194.00'
C10	S 89°50'20" W	194.00'
C11	S 89°50'20" W	194.00'
C12	S 89°50'20" W	194.00'
C13	S 89°50'20" W	194.00'
C14	S 89°50'20" W	194.00'
C15	S 89°50'20" W	194.00'
C16	S 89°50'20" W	194.00'
C17	S 89°50'20" W	194.00'
C18	S 89°50'20" W	194.00'
C19	S 89°50'20" W	194.00'
C20	S 89°50'20" W	194.00'
C21	S 89°50'20" W	194.00'
C22	S 89°50'20" W	194.00'
C23	S 89°50'20" W	194.00'
C24	S 89°50'20" W	194.00'
C25	S 89°50'20" W	194.00'
C26	S 89°50'20" W	194.00'
C27	S 89°50'20" W	194.00'
C28	S 89°50'20" W	194.00'
C29	S 89°50'20" W	194.00'
C30	S 89°50'20" W	194.00'
C31	S 89°50'20" W	194.00'
C32	S 89°50'20" W	194.00'
C33	S 89°50'20" W	194.00'
C34	S 89°50'20" W	194.00'
C35	S 89°50'20" W	194.00'
C36	S 89°50'20" W	194.00'
C37	S 89°50'20" W	194.00'
C38	S 89°50'20" W	194.00'
C39	S 89°50'20" W	194.00'
C40	S 89°50'20" W	194.00'
C41	S 89°50'20" W	194.00'
C42	S 89°50'20" W	194.00'
C43	S 89°50'20" W	194.00'
C44	S 89°50'20" W	194.00'
C45	S 89°50'20" W	194.00'
C46	S 89°50'20" W	194.00'
C47	S 89°50'20" W	194.00'
C48	S 89°50'20" W	194.00'
C49	S 89°50'20" W	194.00'
C50	S 89°50'20" W	194.00'
C51	S 89°50'20" W	194.00'
C52	S 89°50'20" W	194.00'
C53	S 89°50'20" W	194.00'
C54	S 89°50'20" W	194.00'
C55	S 89°50'20" W	194.00'
C56	S 89°50'20" W	194.00'
C57	S 89°50'20" W	194.00'
C58	S 89°50'20" W	194.00'
C59	S 89°50'20" W	194.00'
C60	S 89°50'20" W	194.00'
C61	S 89°50'20" W	194.00'
C62	S 89°50'20" W	194.00'
C63	S 89°50'20" W	194.00'
C64	S 89°50'20" W	194.00'
C65	S 89°50'20" W	194.00'
C66	S 89°50'20" W	194.00'
C67	S 89°50'20" W	194.00'
C68	S 89°50'20" W	194.00'
C69	S 89°50'20" W	194.00'
C70	S 89°50'20" W	194.00'
C71	S 89°50'20" W	194.00'
C72	S 89°50'20" W	194.00'
C73	S 89°50'20" W	194.00'
C74	S 89°50'20" W	194.00'
C75	S 89°50'20" W	194.00'
C76	S 89°50'20" W	194.00'
C77	S 89°50'20" W	194.00'
C78	S 89°50'20" W	194.00'
C79	S 89°50'20" W	194.00'
C80	S 89°50'20" W	194.00'
C81	S 89°50'20" W	194.00'
C82	S 89°50'20" W	194.00'
C83	S 89°50'20" W	194.00'
C84	S 89°50'20" W	194.00'
C85	S 89°50'20" W	194.00'
C86	S 89°50'20" W	194.00'
C87	S 89°50'20" W	194.00'
C88	S 89°50'20" W	194.00'
C89	S 89°50'20" W	194.00'
C90	S 89°50'20" W	194.00'
C91	S 89°50'20" W	194.00'
C92	S 89°50'20" W	194.00'
C93	S 89°50'20" W	194.00'
C94	S 89°50'20" W	194.00'
C95	S 89°50'20" W	194.00'
C96	S 89°50'20" W	194.00'
C97	S 89°50'20" W	194.00'
C98	S 89°50'20" W	194.00'
C99	S 89°50'20" W	194.00'
C100	S 89°50'20" W	194.00'

LINE	BEARING	LENGTH	COORDINATES	REMARKS
L01	S 89°50'20" W	194.00'
L02	S 89°50'20" W	194.00'
L03	S 89°50'20" W	194.00'
L04	S 89°50'20" W	194.00'
L05	S 89°50'20" W	194.00'
L06	S 89°50'20" W	194.00'
L07	S 89°50'20" W	194.00'
L08	S 89°50'20" W	194.00'
L09	S 89°50'20" W	194.00'
L10	S 89°50'20" W	194.00'
L11	S 89°50'20" W	194.00'
L12	S 89°50'20" W	194.00'
L13	S 89°50'20" W	194.00'
L14	S 89°50'20" W	194.00'
L15	S 89°50'20" W	194.00'
L16	S 89°50'20" W	194.00'
L17	S 89°50'20" W	194.00'
L18	S 89°50'20" W	194.00'
L19	S 89°50'20" W	194.00'
L20	S 89°50'20" W	194.00'
L21	S 89°50'20" W	194.00'
L22	S 89°50'20" W	194.00'
L23	S 89°50'20" W	194.00'
L24	S 89°50'20" W	194.00'
L25	S 89°50'20" W	194.00'
L26	S 89°50'20" W	194.00'
L27	S 89°50'20" W	194.00'
L28	S 89°50'20" W	194.00'
L29	S 89°50'20" W	194.00'
L30	S 89°50'20" W	194.00'
L31	S 89°50'20" W	194.00'
L32	S 89°50'20" W	194.00'
L33	S 89°50'20" W	194.00'
L34	S 89°50'20" W	194.00'
L35	S 89°50'20" W	194.00'
L36	S 89°50'20" W	194.00'
L37	S 89°50'20" W	194.00'
L38	S 89°50'20" W	194.00'
L39	S 89°50'20" W	194.00'
L40	S 89°50'20" W	194.00'
L41	S 89°50'20" W	194.00'
L42	S 89°50'20" W	194.00'
L43	S 89°50'20" W	194.00'
L44	S 89°50'20" W	194.00'
L45	S 89°50'20" W	194.00'
L46	S 89°50'20" W	194.00'
L47	S 89°50'20" W	194.00'
L48	S 89°50'20" W	194.00'
L49	S 89°50'20" W	194.00'
L50	S 89°50'20" W	194.00'

DESCRIPTION: TWP 193-00-04-002
REFERENCE PLAT
RECORDED IN PLAT BOOK W PAGE 31
RECORDS OF OCONEE COUNTY.

LOCATION: STATE OF SOUTH CAROLINA
COUNTY OF OCONEE
TOWNSHIP OF WAGENER
CITY OF

AREA OF PARCEL: 14.71 ACRES±

DATE: SEPTEMBER 17, 1993

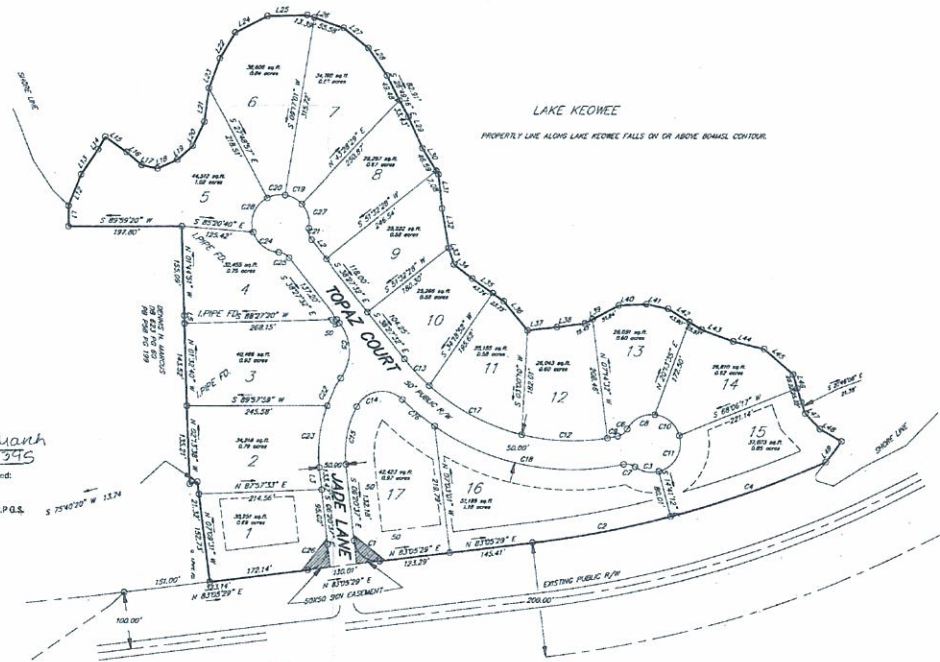
PLAT PREPARED FOR:
CRESCENT RESOURCES, INC

CORNERSTONE OF SENeca, INC
122 EAST NORTH 1ST STREET
PO BOX 822
SENECA, SC 29679
PHONE: 803/982-6476

BY: MICHAEL L. HENDERSON
MICHAEL L. HENDERSON, PLS 8046

FILED 11/17/93
CLERK OF COURT
SC HW 11 17 93

193-00



NOTES:
SETBACKS:
(UNLESS OTHERWISE INDICATED ON PLAT)
FRONT SETBACKS ARE 50'
SIDE SETBACKS ARE 10'
REAR SETBACK ON INTERIOR LOTS IS 35'
LAKEFRONT SETBACK IS 50'
EASEMENTS:
5' DRAINAGE AND UTILITY EASEMENT ALONG ALL SIDE LOT LINES
10' DRAINAGE AND UTILITY EASEMENTS ALONG ALL FRONT AND REAR LOT LINES
FLOOD EASEMENT TAKEN TO 810 MSL CONTOUR
LAKE SHORELINE BOUNDARY FALLS ON OR ABOVE 804 MSL CONTOUR.

ACCEPTED FOR OCONEE COUNTY BY:
[Signature]
AUTHORITY: 193-00-04-002
DATE: 11/17/93

[Signature]
Clerk of Court

PHASE 2
14.71 ACRES
11/17/93



SC HWY 188