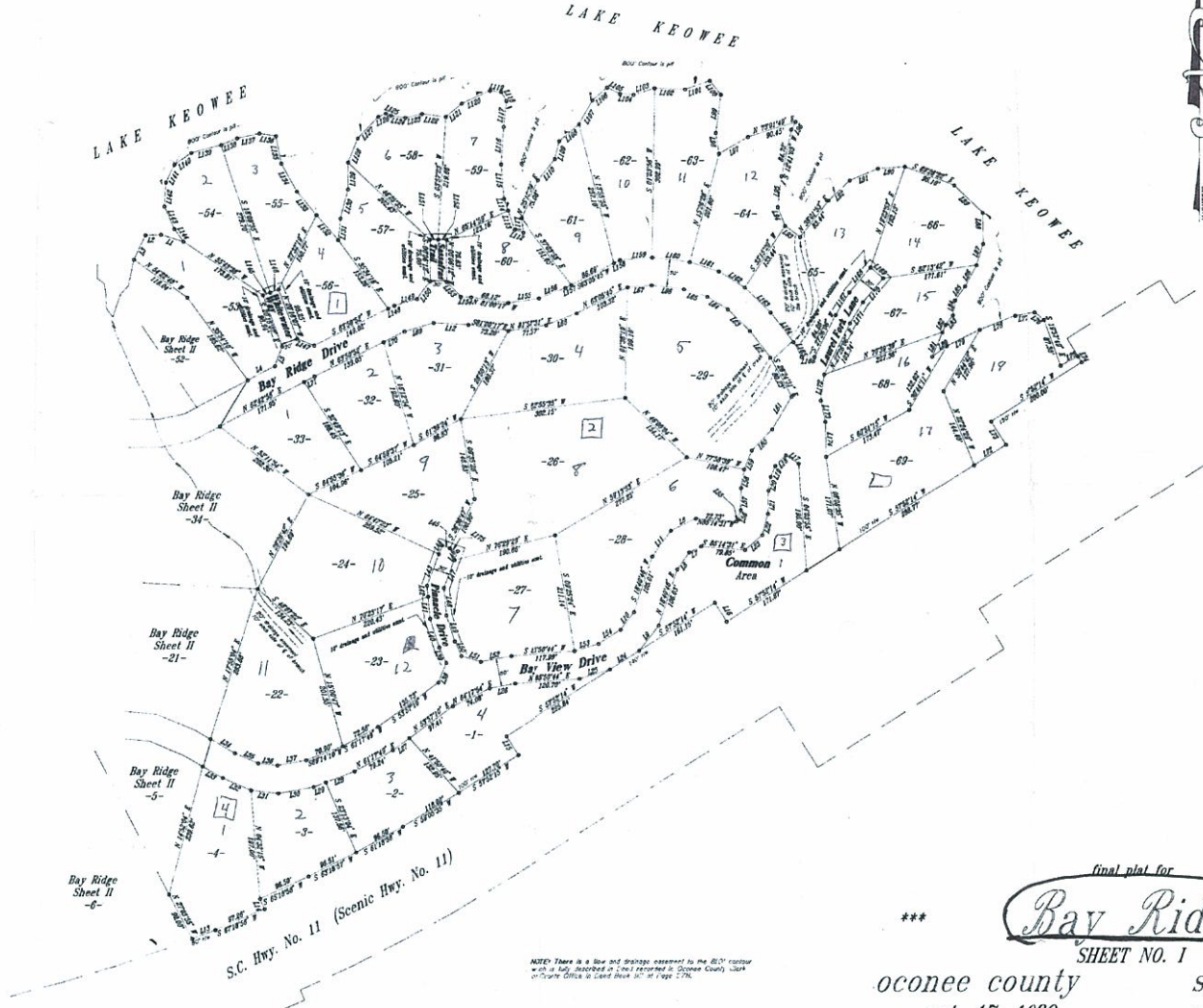


THE LAKE COMPANY
LAKE KEOWEE, SC

1/6 056-00-02-002
WAS SET UP AS
Bay Ridge Subdivision with
Parcel Numbers
056-02-01-001 thru 018
056-02-02-001 thru 012
056-02-03-001
056-02-04-001 thru 004

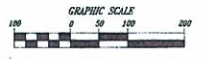
LINE	DIRECTION	DISTANCE	LINE	DIRECTION	DISTANCE
1	S 79°17'40" E	68.95	101	S 89°54'48" E	36.80
2	N 08°22'42" E	68.95	102	S 85°28'54" E	36.80
3	S 21°13'20" E	68.95	103	N 89°43'52" E	36.80
4	S 87°54'00" E	68.95	104	N 89°43'52" E	36.80
5	S 21°13'20" E	68.95	105	S 85°28'54" E	36.80
6	S 87°54'00" E	68.95	106	S 89°54'48" E	36.80
7	S 21°13'20" E	68.95	107	N 89°43'52" E	36.80
8	S 87°54'00" E	68.95	108	S 85°28'54" E	36.80
9	S 21°13'20" E	68.95	109	N 89°43'52" E	36.80
10	S 87°54'00" E	68.95	110	S 89°54'48" E	36.80
11	S 21°13'20" E	68.95	111	N 89°43'52" E	36.80
12	S 87°54'00" E	68.95	112	S 85°28'54" E	36.80
13	S 21°13'20" E	68.95	113	N 89°43'52" E	36.80
14	S 87°54'00" E	68.95	114	S 89°54'48" E	36.80
15	S 21°13'20" E	68.95	115	N 89°43'52" E	36.80
16	S 87°54'00" E	68.95	116	S 85°28'54" E	36.80
17	S 21°13'20" E	68.95	117	N 89°43'52" E	36.80
18	S 87°54'00" E	68.95	118	S 89°54'48" E	36.80
19	S 21°13'20" E	68.95	119	N 89°43'52" E	36.80
20	S 87°54'00" E	68.95	120	S 85°28'54" E	36.80
21	S 21°13'20" E	68.95	121	N 89°43'52" E	36.80
22	S 87°54'00" E	68.95	122	S 89°54'48" E	36.80
23	S 21°13'20" E	68.95	123	N 89°43'52" E	36.80
24	S 87°54'00" E	68.95	124	S 85°28'54" E	36.80
25	S 21°13'20" E	68.95	125	N 89°43'52" E	36.80
26	S 87°54'00" E	68.95	126	S 89°54'48" E	36.80
27	S 21°13'20" E	68.95	127	N 89°43'52" E	36.80
28	S 87°54'00" E	68.95	128	S 85°28'54" E	36.80
29	S 21°13'20" E	68.95	129	N 89°43'52" E	36.80
30	S 87°54'00" E	68.95	130	S 89°54'48" E	36.80
31	S 21°13'20" E	68.95	131	N 89°43'52" E	36.80
32	S 87°54'00" E	68.95	132	S 85°28'54" E	36.80
33	S 21°13'20" E	68.95	133	N 89°43'52" E	36.80
34	S 87°54'00" E	68.95	134	S 89°54'48" E	36.80
35	S 21°13'20" E	68.95	135	N 89°43'52" E	36.80
36	S 87°54'00" E	68.95	136	S 85°28'54" E	36.80
37	S 21°13'20" E	68.95	137	N 89°43'52" E	36.80
38	S 87°54'00" E	68.95	138	S 89°54'48" E	36.80
39	S 21°13'20" E	68.95	139	N 89°43'52" E	36.80
40	S 87°54'00" E	68.95	140	S 85°28'54" E	36.80
41	S 21°13'20" E	68.95	141	N 89°43'52" E	36.80
42	S 87°54'00" E	68.95	142	S 89°54'48" E	36.80
43	S 21°13'20" E	68.95	143	N 89°43'52" E	36.80
44	S 87°54'00" E	68.95	144	S 85°28'54" E	36.80
45	S 21°13'20" E	68.95	145	N 89°43'52" E	36.80
46	S 87°54'00" E	68.95	146	S 89°54'48" E	36.80
47	S 21°13'20" E	68.95	147	N 89°43'52" E	36.80
48	S 87°54'00" E	68.95	148	S 85°28'54" E	36.80
49	S 21°13'20" E	68.95	149	N 89°43'52" E	36.80
50	S 87°54'00" E	68.95	150	S 89°54'48" E	36.80
51	S 21°13'20" E	68.95	151	N 89°43'52" E	36.80
52	S 87°54'00" E	68.95	152	S 85°28'54" E	36.80
53	S 21°13'20" E	68.95	153	N 89°43'52" E	36.80
54	S 87°54'00" E	68.95	154	S 89°54'48" E	36.80
55	S 21°13'20" E	68.95	155	N 89°43'52" E	36.80
56	S 87°54'00" E	68.95	156	S 85°28'54" E	36.80
57	S 21°13'20" E	68.95	157	N 89°43'52" E	36.80
58	S 87°54'00" E	68.95	158	S 89°54'48" E	36.80
59	S 21°13'20" E	68.95	159	N 89°43'52" E	36.80
60	S 87°54'00" E	68.95	160	S 85°28'54" E	36.80
61	S 21°13'20" E	68.95	161	N 89°43'52" E	36.80
62	S 87°54'00" E	68.95	162	S 89°54'48" E	36.80
63	S 21°13'20" E	68.95	163	N 89°43'52" E	36.80
64	S 87°54'00" E	68.95	164	S 85°28'54" E	36.80
65	S 21°13'20" E	68.95	165	N 89°43'52" E	36.80
66	S 87°54'00" E	68.95	166	S 89°54'48" E	36.80
67	S 21°13'20" E	68.95	167	N 89°43'52" E	36.80
68	S 87°54'00" E	68.95	168	S 85°28'54" E	36.80
69	S 21°13'20" E	68.95	169	N 89°43'52" E	36.80
70	S 87°54'00" E	68.95	170	S 89°54'48" E	36.80
71	S 21°13'20" E	68.95	171	N 89°43'52" E	36.80
72	S 87°54'00" E	68.95	172	S 85°28'54" E	36.80
73	S 21°13'20" E	68.95	173	N 89°43'52" E	36.80
74	S 87°54'00" E	68.95	174	S 89°54'48" E	36.80
75	S 21°13'20" E	68.95	175	N 89°43'52" E	36.80
76	S 87°54'00" E	68.95	176	S 85°28'54" E	36.80
77	S 21°13'20" E	68.95	177	N 89°43'52" E	36.80
78	S 87°54'00" E	68.95	178	S 89°54'48" E	36.80
79	S 21°13'20" E	68.95	179	N 89°43'52" E	36.80
80	S 87°54'00" E	68.95	180	S 85°28'54" E	36.80
81	S 21°13'20" E	68.95	181	N 89°43'52" E	36.80
82	S 87°54'00" E	68.95	182	S 89°54'48" E	36.80
83	S 21°13'20" E	68.95	183	N 89°43'52" E	36.80
84	S 87°54'00" E	68.95	184	S 85°28'54" E	36.80
85	S 21°13'20" E	68.95	185	N 89°43'52" E	36.80
86	S 87°54'00" E	68.95	186	S 89°54'48" E	36.80
87	S 21°13'20" E	68.95	187	N 89°43'52" E	36.80
88	S 87°54'00" E	68.95	188	S 85°28'54" E	36.80
89	S 21°13'20" E	68.95	189	N 89°43'52" E	36.80
90	S 87°54'00" E	68.95	190	S 89°54'48" E	36.80
91	S 21°13'20" E	68.95	191	N 89°43'52" E	36.80
92	S 87°54'00" E	68.95	192	S 85°28'54" E	36.80
93	S 21°13'20" E	68.95	193	N 89°43'52" E	36.80
94	S 87°54'00" E	68.95	194	S 89°54'48" E	36.80
95	S 21°13'20" E	68.95	195	N 89°43'52" E	36.80
96	S 87°54'00" E	68.95	196	S 85°28'54" E	36.80
97	S 21°13'20" E	68.95	197	N 89°43'52" E	36.80
98	S 87°54'00" E	68.95	198	S 89°54'48" E	36.80
99	S 21°13'20" E	68.95	199	N 89°43'52" E	36.80
100	S 87°54'00" E	68.95	200	S 85°28'54" E	36.80



Recorded this 22nd day of Nov. 1989
Vol. 496, Page 20 and certified
Allen G. Smith
C.C.C.P.A.S.
Oconee County, S.C.

final plat for
Bay Ridge
SHEET NO. 1

oconee county south carolina
oct. 17, 1989 scale 1"=100'



Robert R. Spearman, RLS # 3615
Post Office Box 6
415 Pendleton Street
Easley, South Carolina 29641
Phone(803)859-2309

NOTE: There is a 3" change and addition to the lot area of all lots shown and a 1/2" change and addition to most lots of all interior lot lines except where otherwise noted. These notes do not affect the lot area of the lots shown in this plat.

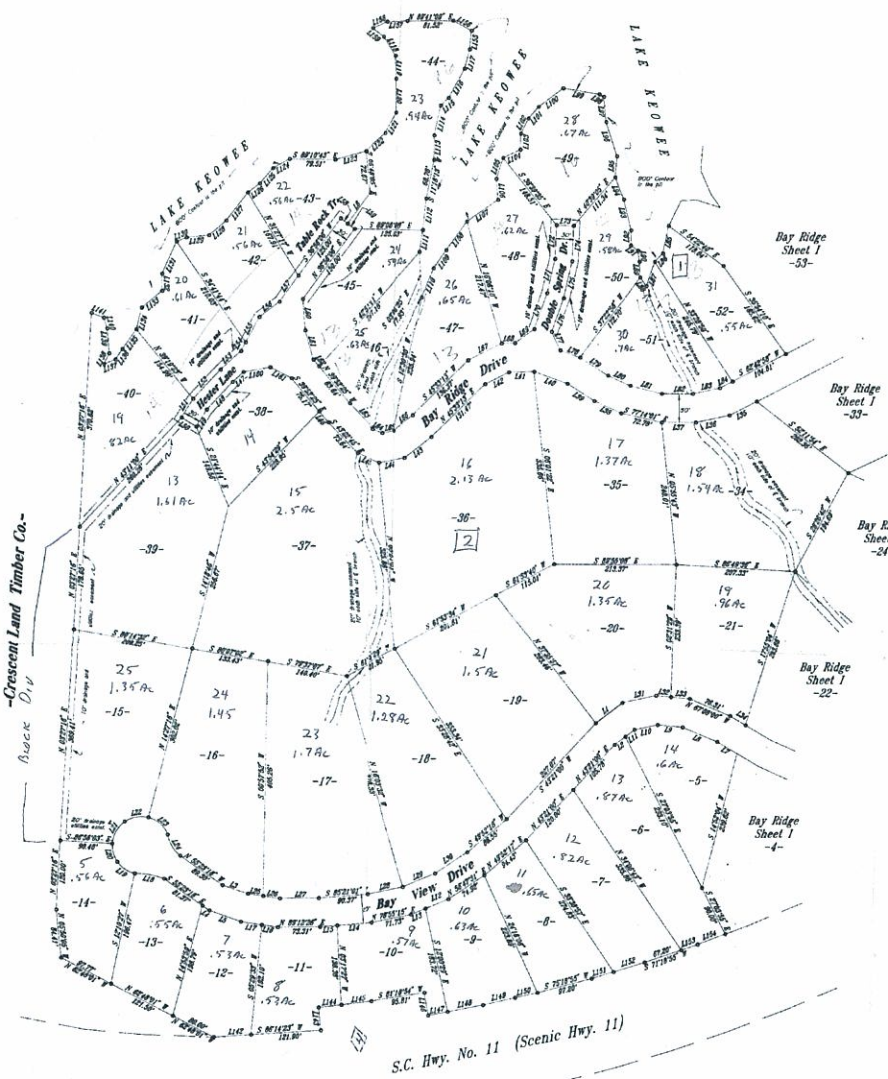
I do hereby certify that the plat of subdivision of the land shown in this plat was prepared in accordance with the laws of South Carolina, and that the same was approved by me as required by law.
Robert R. Spearman, RLS # 3615

THE LAKE COMPANY
LAKE KEOWEE, SC



LINE	DESCRIPTION	DISTANCE	LINE	DESCRIPTION	DISTANCE
11	N 85°00'00" E	68.29'	120	N 85°00'00" E	42.87'
12	S 85°00'00" W	23.17'	121	N 75°00'00" E	36.30'
13	S 75°00'00" W	45.73'	122	S 85°00'00" W	24.80'
14	N 85°00'00" E	14.50'	123	S 75°00'00" W	48.41'
15	N 85°00'00" E	58.34'	124	S 85°00'00" W	26.80'
16	S 85°00'00" W	67.00'	125	N 15°00'00" E	44.85'
17	S 85°00'00" W	68.00'	126	N 85°00'00" E	24.17'
18	S 85°00'00" W	68.41'	127	N 15°00'00" E	24.17'
19	S 85°00'00" W	43.27'	128	S 85°00'00" W	14.26'
20	N 85°00'00" E	14.26'	129	S 85°00'00" W	27.80'
21	N 85°00'00" E	14.26'	130	S 85°00'00" W	27.80'
22	N 85°00'00" E	14.26'	131	S 85°00'00" W	27.80'
23	N 85°00'00" E	14.26'	132	S 85°00'00" W	27.80'
24	N 85°00'00" E	14.26'	133	S 85°00'00" W	27.80'
25	N 85°00'00" E	14.26'	134	S 85°00'00" W	27.80'
26	N 85°00'00" E	14.26'	135	S 85°00'00" W	27.80'
27	N 85°00'00" E	14.26'	136	S 85°00'00" W	27.80'
28	N 85°00'00" E	14.26'	137	S 85°00'00" W	27.80'
29	N 85°00'00" E	14.26'	138	S 85°00'00" W	27.80'
30	N 85°00'00" E	14.26'	139	S 85°00'00" W	27.80'
31	N 85°00'00" E	14.26'	140	S 85°00'00" W	27.80'
32	N 85°00'00" E	14.26'	141	S 85°00'00" W	27.80'
33	N 85°00'00" E	14.26'	142	S 85°00'00" W	27.80'
34	N 85°00'00" E	14.26'	143	S 85°00'00" W	27.80'
35	N 85°00'00" E	14.26'	144	S 85°00'00" W	27.80'
36	N 85°00'00" E	14.26'	145	S 85°00'00" W	27.80'
37	N 85°00'00" E	14.26'	146	S 85°00'00" W	27.80'
38	N 85°00'00" E	14.26'	147	S 85°00'00" W	27.80'
39	N 85°00'00" E	14.26'	148	S 85°00'00" W	27.80'
40	N 85°00'00" E	14.26'	149	S 85°00'00" W	27.80'
41	N 85°00'00" E	14.26'	150	S 85°00'00" W	27.80'
42	N 85°00'00" E	14.26'	151	S 85°00'00" W	27.80'
43	N 85°00'00" E	14.26'	152	S 85°00'00" W	27.80'
44	N 85°00'00" E	14.26'	153	S 85°00'00" W	27.80'
45	N 85°00'00" E	14.26'	154	S 85°00'00" W	27.80'
46	N 85°00'00" E	14.26'	155	S 85°00'00" W	27.80'
47	N 85°00'00" E	14.26'	156	S 85°00'00" W	27.80'
48	N 85°00'00" E	14.26'	157	S 85°00'00" W	27.80'
49	N 85°00'00" E	14.26'	158	S 85°00'00" W	27.80'
50	N 85°00'00" E	14.26'	159	S 85°00'00" W	27.80'
51	N 85°00'00" E	14.26'	160	S 85°00'00" W	27.80'
52	N 85°00'00" E	14.26'	161	S 85°00'00" W	27.80'
53	N 85°00'00" E	14.26'	162	S 85°00'00" W	27.80'
54	N 85°00'00" E	14.26'	163	S 85°00'00" W	27.80'
55	N 85°00'00" E	14.26'	164	S 85°00'00" W	27.80'
56	N 85°00'00" E	14.26'	165	S 85°00'00" W	27.80'
57	N 85°00'00" E	14.26'	166	S 85°00'00" W	27.80'
58	N 85°00'00" E	14.26'	167	S 85°00'00" W	27.80'
59	N 85°00'00" E	14.26'	168	S 85°00'00" W	27.80'
60	N 85°00'00" E	14.26'	169	S 85°00'00" W	27.80'
61	N 85°00'00" E	14.26'	170	S 85°00'00" W	27.80'
62	N 85°00'00" E	14.26'	171	S 85°00'00" W	27.80'
63	N 85°00'00" E	14.26'	172	S 85°00'00" W	27.80'
64	N 85°00'00" E	14.26'	173	S 85°00'00" W	27.80'
65	N 85°00'00" E	14.26'	174	S 85°00'00" W	27.80'
66	N 85°00'00" E	14.26'	175	S 85°00'00" W	27.80'
67	N 85°00'00" E	14.26'	176	S 85°00'00" W	27.80'
68	N 85°00'00" E	14.26'	177	S 85°00'00" W	27.80'
69	N 85°00'00" E	14.26'	178	S 85°00'00" W	27.80'
70	N 85°00'00" E	14.26'	179	S 85°00'00" W	27.80'
71	N 85°00'00" E	14.26'	180	S 85°00'00" W	27.80'
72	N 85°00'00" E	14.26'	181	S 85°00'00" W	27.80'
73	N 85°00'00" E	14.26'	182	S 85°00'00" W	27.80'
74	N 85°00'00" E	14.26'	183	S 85°00'00" W	27.80'
75	N 85°00'00" E	14.26'	184	S 85°00'00" W	27.80'
76	N 85°00'00" E	14.26'	185	S 85°00'00" W	27.80'
77	N 85°00'00" E	14.26'	186	S 85°00'00" W	27.80'
78	N 85°00'00" E	14.26'	187	S 85°00'00" W	27.80'
79	N 85°00'00" E	14.26'	188	S 85°00'00" W	27.80'
80	N 85°00'00" E	14.26'	189	S 85°00'00" W	27.80'
81	N 85°00'00" E	14.26'	190	S 85°00'00" W	27.80'
82	N 85°00'00" E	14.26'	191	S 85°00'00" W	27.80'
83	N 85°00'00" E	14.26'	192	S 85°00'00" W	27.80'
84	N 85°00'00" E	14.26'	193	S 85°00'00" W	27.80'
85	N 85°00'00" E	14.26'	194	S 85°00'00" W	27.80'
86	N 85°00'00" E	14.26'	195	S 85°00'00" W	27.80'
87	N 85°00'00" E	14.26'	196	S 85°00'00" W	27.80'
88	N 85°00'00" E	14.26'	197	S 85°00'00" W	27.80'
89	N 85°00'00" E	14.26'	198	S 85°00'00" W	27.80'
90	N 85°00'00" E	14.26'	199	S 85°00'00" W	27.80'
91	N 85°00'00" E	14.26'	200	S 85°00'00" W	27.80'

1155



56-00-02-002
ALL ACREAGE CALCULATED

Recorded this 22 day of Nov A.D. 19 79
Vol. 446 Page 3 and certified
Robert E. Spearman, RLS
Notary Public, S.C.

final plat for
*** Bay Ridge ***
SHEET NO. 11
oconee county south carolina
oct. 17, 1989 scale 1"=100'



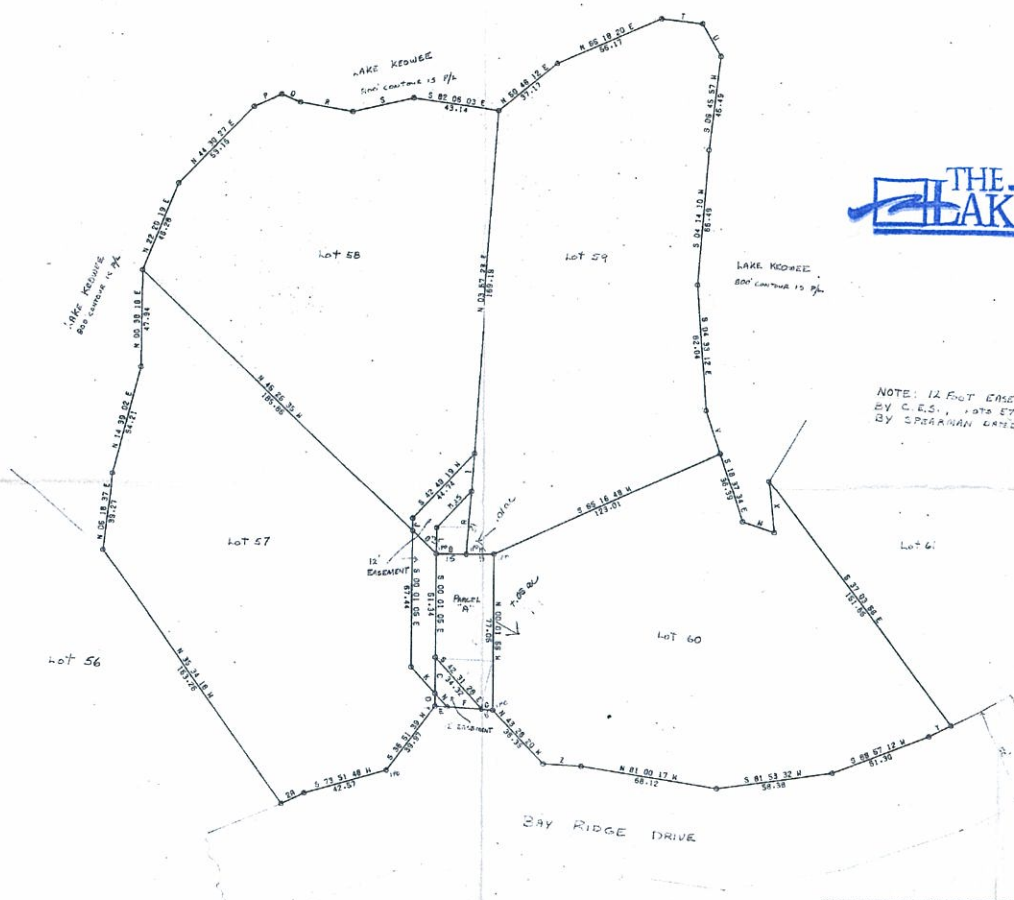
NOTE: There is a flow and drainage assessment in the 810' contour which is lay described in Deed recorded in Oconee County Clerk of Courts Office in Land Book 300 at Page 276.

NOTE: There is a 1' drainage and utility easement each side of all interior lot lines and a 10' drainage and utility easement each side of all exterior lot lines, except where otherwise noted. These lots shall lie between Sheet No. 1 and Sheet No. 11 as contained interior lot lines.

I hereby certify that the ratio of provision of the field notes is 1:100000 as shown herein and that the area was determined by GPS method of area calculation.
Robert E. Spearman, RLS # 3615

Robert E. Spearman, RLS # 3615
Post Office Box 6
415 Pendleton Street
Easley, South Carolina 29641
Phone(803)859-2309

PHOTOGRAPHED
BY
LARRY W. BROWN
Jan 24 8 27 AM '83
COLUMBIA S-107



LINE	BEARING	LENGTH
A	S 53° 57' 23" W	51.54
B	N 89° 28' 38" E	14.90
C	S 80° 01' 05" E	17.76
D	S 88° 37' 20" E	4.18
E	S 88° 30' 20" E	12.09
F	S 88° 30' 20" E	12.09
G	S 88° 30' 20" E	12.09
H	S 88° 30' 20" E	12.09
I	S 88° 30' 20" E	12.09
J	S 88° 30' 20" E	12.09
K	S 88° 30' 20" E	12.09
L	S 88° 30' 20" E	12.09
M	S 88° 30' 20" E	12.09
N	S 88° 30' 20" E	12.09
O	S 88° 30' 20" E	12.09
P	S 88° 30' 20" E	12.09
Q	S 88° 30' 20" E	12.09
R	S 88° 30' 20" E	12.09
S	S 88° 30' 20" E	12.09
T	S 88° 30' 20" E	12.09
U	S 88° 30' 20" E	12.09
V	S 88° 30' 20" E	12.09
W	S 88° 30' 20" E	12.09
X	S 88° 30' 20" E	12.09
Y	S 88° 30' 20" E	12.09
Z	S 88° 30' 20" E	12.09

THE LAKE COMPANY
LAKE KEOWEE, SC

NOTE: 12 FOOT EASEMENT AND PARCEL A SURVEY BY C.E.S., 1978 ET-40 TAKEN FROM SUBD. PLAT BY SPEARMAN DATED 11/1/89

Recorded 20 day of June, 1991
Vol. 491 Page 57 and certified
Shelley C. Smith, C.E.S.
Oconee County, S.C.

CLEMSON ENGINEERING SERVICES

PLAT OF UNBALANCED TRAVERSE PRECISION OF FIELD SURVEY- 1:10000 SCALE 1 IN.=30 FT. 	DATE: JUNE 15, 1991 STATE OF SOUTH CAROLINA COUNTY OF OCONEE TOWNSHIP OF KEOWEE LOTS 57 58 59 & 60 BAY RIDGE
PLAT PREPARED FOR INGRAM ENTERPRISES, INC.	I CERTIFY THE FIELD SURVEY PRECISION AS NOTED AND THAT THE AREA WAS CALCULATED BY THE OLD METHOD Shelley C. Smith P. WAY COOPER P.E., C.L.S.-4682 PHONE 803-854-2573
PROPERTY SUBJECT TO ANY AND ALL RIGHTS-OF-WAY, EASEMENTS, OR RESTRICTIONS OF RECORD. REF. PLAT BY SPEARMAN 10-17-89 FIELD WORK BY CORTEE-COOPER	

PLAT
DATE
3 03 11 91
COURT
COUNTY