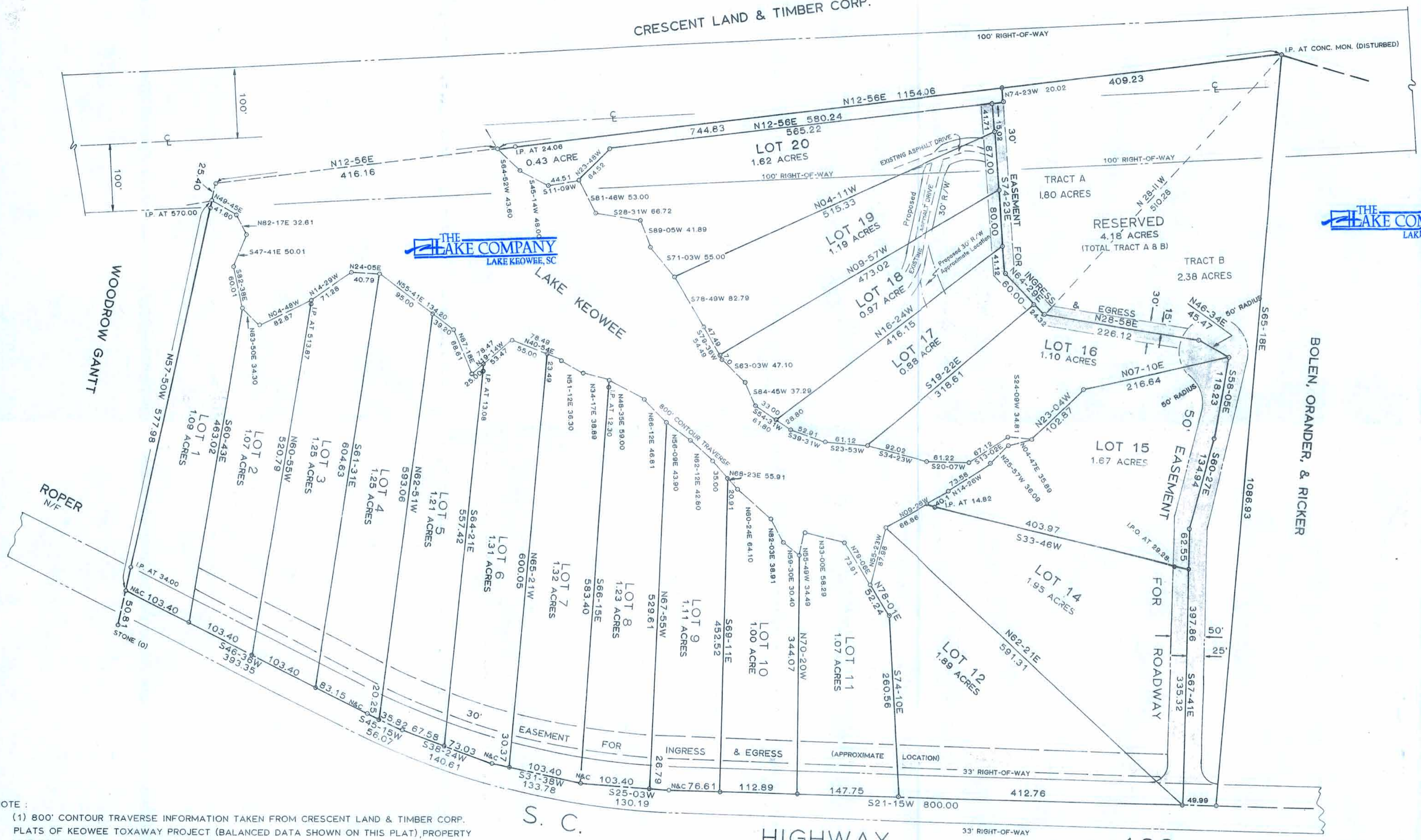


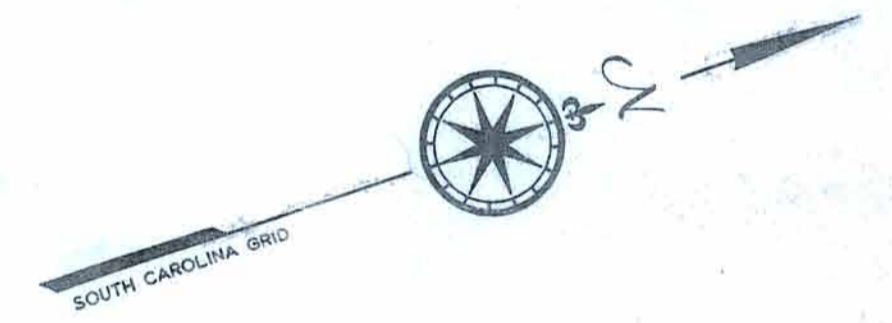
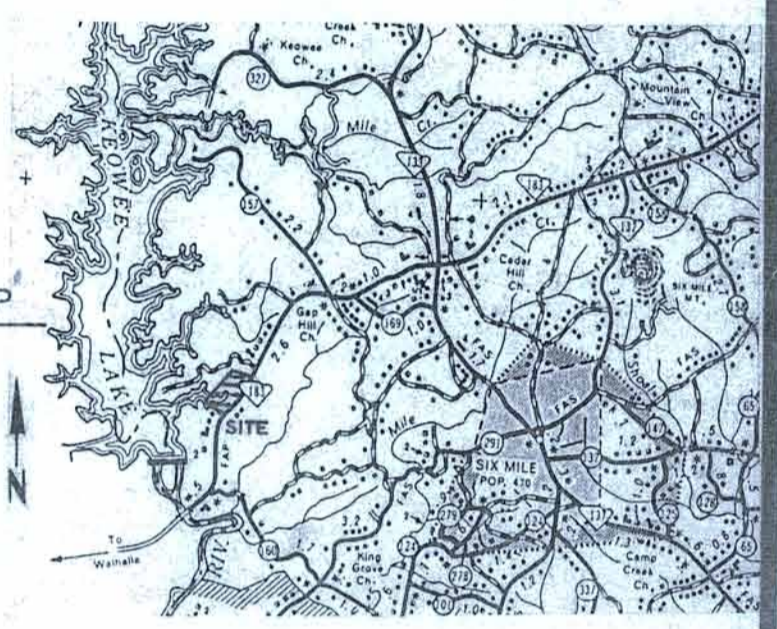


CRESCENT LAND & TIMBER CORP.



THE LAKE COMPANY
 LAKE KEOWEE, SC

LOCATION MAP
 1" = 2 MILES



I hereby certify that the ratio of precision of the field survey is 1/7,500 as shown hereon and the area was determined by the Double Meridian Distance method of area calculation.
 Clarence E. Shehan Reg. L.S. No. 8810

C. E. SHEHAN SURVEYING
 REGISTERED LAND SURVEYOR NO. 8810
 200 ANN STREET
 Pickens, South Carolina 29671
 Phone: 803-878-9528

- NOTE:
- (1) 800' CONTOUR TRAVERSE INFORMATION TAKEN FROM CRESCENT LAND & TIMBER CORP. PLATS OF KEOWEE TOXAWAY PROJECT (BALANCED DATA SHOWN ON THIS PLAT), PROPERTY LINE FOLLOWS 800' CONTOUR ELEVATION.
 - (2) THIS PLAT REVISED FOR ADDITION OF LOTS 12 - 20 DATED, DECEMBER 26, 1984.
 - (3) LOT 13 HAS BEEN OMITTED.
 - (4) PROPERTY & AREAS SUBJECT TO ANY & ALL RIGHTS-OF-WAY & EASEMENTS OF RECORD.

Note this plat revised January 27, 1994, to show PROPOSED 30' R/W along existing asphalt drive on Lots 18, 19, & 20, and approximate location across to Lot 17.
 NOTE THIS PLAT REVISED JANUARY 16, 1991, TO SHOW CALCULATED LINE (SHOWN AS DASHED LINE) IN RESERVED AREA- LABELED AS TRACT A & TRACT B.
 NOTE: THIS PLAT REVISED 3-1-89, TO SHOW CHANGES IN LOT 14 & LOT 15.