

PLAT # 889D
DIST # C-1000 2000-1 NAME CRESTVIEW-SEC1
FB # 170 PG # 25

LOCATION AND MAP NOT TO SCALE

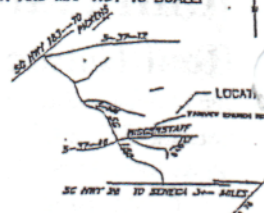
CRESTVIEW

GRID NORTH (SUNSHOT)



LAKE KEOWEE

PROPERTY LINE FOLLOWS 80% AQL CONTOUR
FLOOD EASEMENT TO 810 AQL CONTOUR



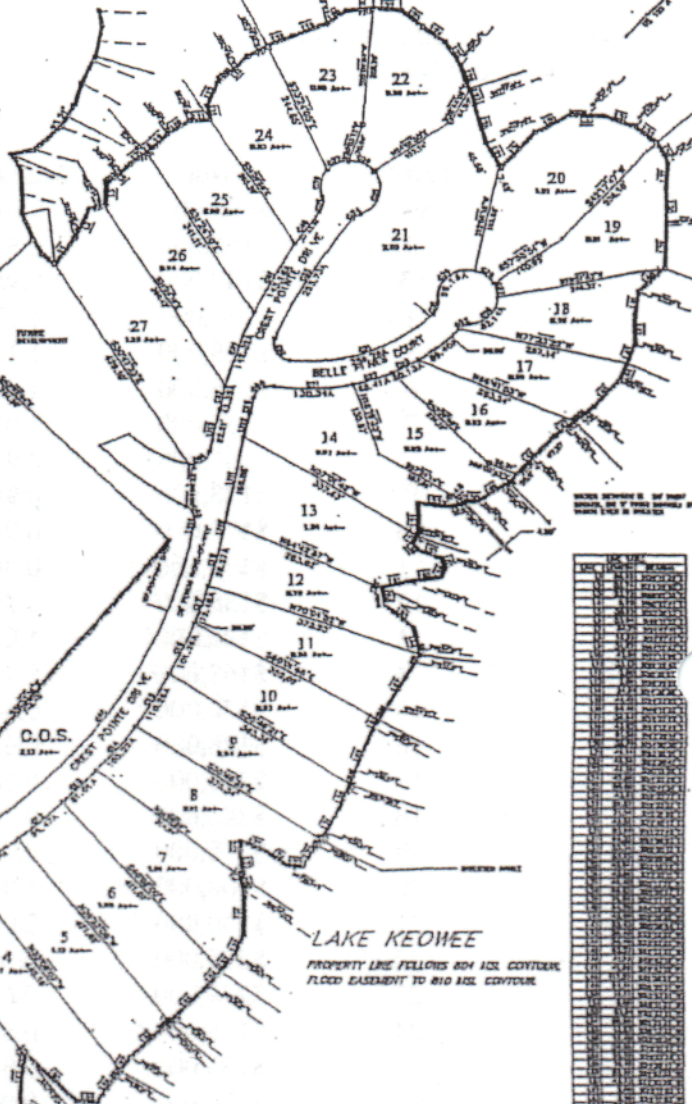
THE LAKE COMPANY
PHASE 2
LAKE KEOWEE, SC DEVELOPMENT

LOT NO.	ACRES	OWNER
1	0.23	...
2	0.23	...
3	0.23	...
4	0.23	...
5	0.23	...
6	0.23	...
7	0.23	...
8	0.23	...
9	0.23	...
10	0.23	...
11	0.23	...
12	0.23	...
13	0.23	...
14	0.23	...
15	0.23	...
16	0.23	...
17	0.23	...
18	0.23	...
19	0.23	...
20	0.23	...
21	0.23	...
22	0.23	...
23	0.23	...
24	0.23	...
25	0.23	...
26	0.23	...
27	0.23	...

PHASE 2
FUTURE DEVELOPMENT

FORWALK CODE
SB 1021 PAGE 73
FB A31 PAGE 2

LAUREN C. TRILTY
SB 1021 PAGE 73
FB A31 PAGE 2



LOT NO.	ACRES	OWNER
1	0.23	...
2	0.23	...
3	0.23	...
4	0.23	...
5	0.23	...
6	0.23	...
7	0.23	...
8	0.23	...
9	0.23	...
10	0.23	...
11	0.23	...
12	0.23	...
13	0.23	...
14	0.23	...
15	0.23	...
16	0.23	...
17	0.23	...
18	0.23	...
19	0.23	...
20	0.23	...
21	0.23	...
22	0.23	...
23	0.23	...
24	0.23	...
25	0.23	...
26	0.23	...
27	0.23	...

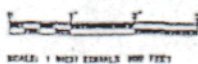
LAKE KEOWEE
PROPERTY LINE FOLLOWS 80% AQL CONTOUR
FLOOD EASEMENT TO 810 AQL CONTOUR

THE LAKE COMPANY
LAKE KEOWEE, SC

RECORDS SHOW A PORTION OF THE PROPERTY
PLANNED IN 2002 EARLY 8-10 PAGE 241

CONTRACTOR OF RECORD, INC.
200 WESTWIND DRIVE
P.O. BOX 823
BETHLEHEM, SC 29629
PHONE: 864-763-1479

- NOTES:
- 1) ALL CORNERS ARE TO BE MARKED WITH IRON PIPES UNLESS OTHERWISE SHOWN.
 - 2) PUBLIC RIGHT OF WAY ARE A MINIMUM OF 30'.
 - 3) PUBLIC 80%-85-AND HIGHER ARE 30'.
- SETBACKS:
- 1) IF NEIGHBORING 80% SETBACKS EXIST, ALL SETBACKS SHALL BE 30' FROM PROPERTY LINE UNLESS OTHERWISE SHOWN.
 - 2) IF NEIGHBORING 80% SETBACKS EXIST, ALL SETBACKS SHALL BE 30' FROM PROPERTY LINE UNLESS OTHERWISE SHOWN.
 - 3) FLOOD EASEMENT TO 810 AQL CONTOUR.
- MARKING SETBACKS:
- 1) PROPERTY SETBACKS SHALL BE MARKED WITH IRON PIPES UNLESS OTHERWISE SHOWN.
 - 2) PROPERTY SETBACKS SHALL BE MARKED WITH IRON PIPES UNLESS OTHERWISE SHOWN.
 - 3) IF NEIGHBORING 80% SETBACKS EXIST, ALL SETBACKS SHALL BE 30' FROM PROPERTY LINE UNLESS OTHERWISE SHOWN.
 - 4) NEAR SETBACKS ARE 30' FROM PROPERTY LINE.
 - 5) WATERWAY SETBACKS ARE 30' FROM PROPERTY LINE UNLESS OTHERWISE SHOWN.



SCALE: 1 INCH EQUALS 100 FEET

PLAT / B-89902
DISK / C:\DWG 2002-1\NAME: CREST-P2-SE02
FB / 170 PG 9-23

CRESTVIEW

LOCATION AND MAP NOT TO SCALE

GRID NORTH (SUNSHOT)



PHASE II

LAKE KEOWEE

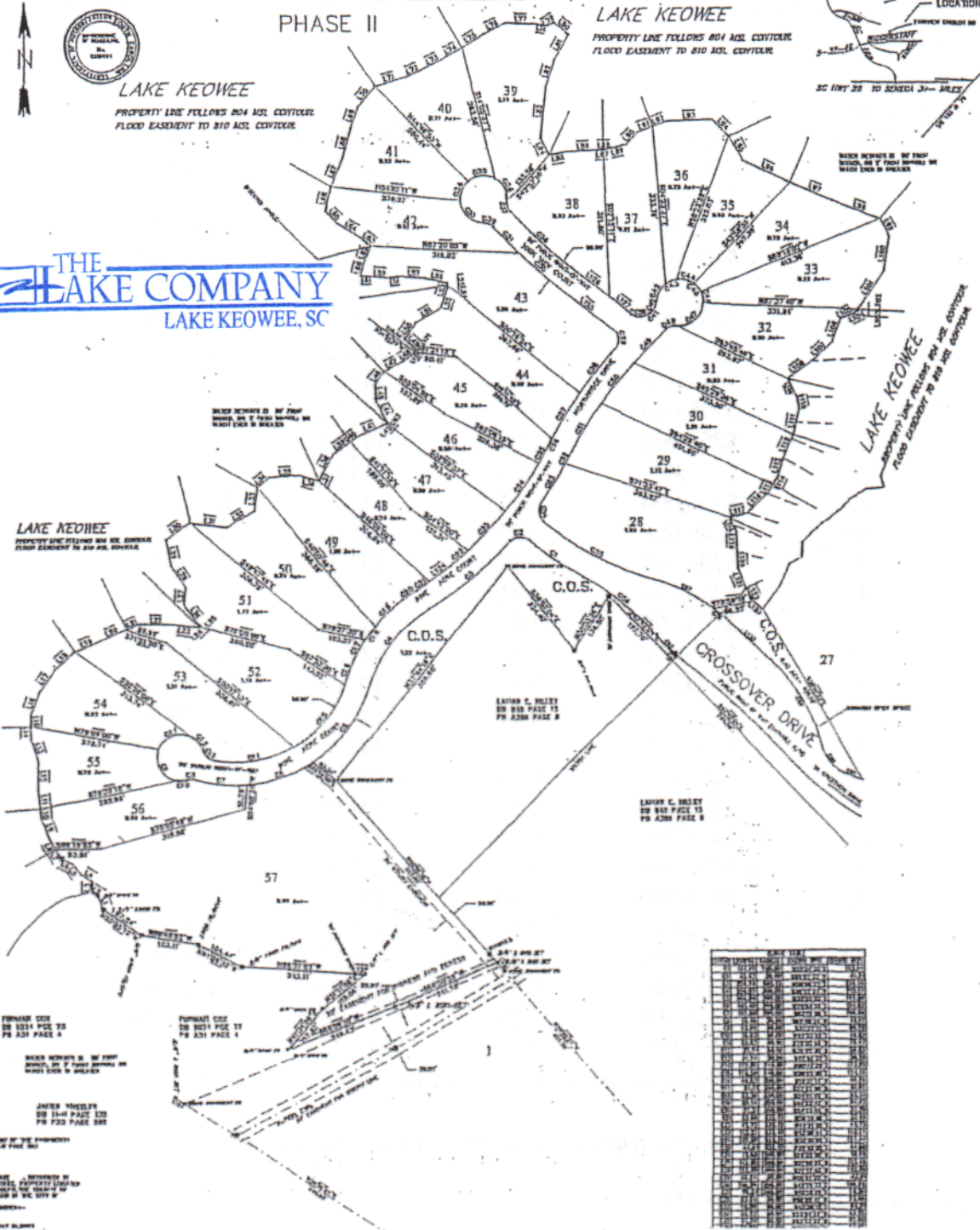
PROPERTY LINE FOLLOWS 804 ASL CONTOUR.
FLOOD EASEMENT TO 810 ASL CONTOUR.

LAKE KEOWEE

PROPERTY LINE FOLLOWS 804 ASL CONTOUR.
FLOOD EASEMENT TO 810 ASL CONTOUR.

THE LAKE COMPANY
LAKE KEOWEE, SC

LOT	AREA	PERMITS
1	0.12	
2	0.12	
3	0.12	
4	0.12	
5	0.12	
6	0.12	
7	0.12	
8	0.12	
9	0.12	
10	0.12	
11	0.12	
12	0.12	
13	0.12	
14	0.12	
15	0.12	
16	0.12	
17	0.12	
18	0.12	
19	0.12	
20	0.12	
21	0.12	
22	0.12	
23	0.12	
24	0.12	
25	0.12	
26	0.12	
27	0.12	
28	0.12	
29	0.12	
30	0.12	
31	0.12	
32	0.12	
33	0.12	
34	0.12	
35	0.12	
36	0.12	
37	0.12	
38	0.12	
39	0.12	
40	0.12	
41	0.12	
42	0.12	
43	0.12	
44	0.12	
45	0.12	
46	0.12	
47	0.12	
48	0.12	
49	0.12	
50	0.12	
51	0.12	
52	0.12	
53	0.12	
54	0.12	
55	0.12	
56	0.12	
57	0.12	



LOT	AREA	PERMITS
1	0.12	
2	0.12	
3	0.12	
4	0.12	
5	0.12	
6	0.12	
7	0.12	
8	0.12	
9	0.12	
10	0.12	
11	0.12	
12	0.12	
13	0.12	
14	0.12	
15	0.12	
16	0.12	
17	0.12	
18	0.12	
19	0.12	
20	0.12	
21	0.12	
22	0.12	
23	0.12	
24	0.12	
25	0.12	
26	0.12	
27	0.12	
28	0.12	
29	0.12	
30	0.12	
31	0.12	
32	0.12	
33	0.12	
34	0.12	
35	0.12	
36	0.12	
37	0.12	
38	0.12	
39	0.12	
40	0.12	
41	0.12	
42	0.12	
43	0.12	
44	0.12	
45	0.12	
46	0.12	
47	0.12	
48	0.12	
49	0.12	
50	0.12	
51	0.12	
52	0.12	
53	0.12	
54	0.12	
55	0.12	
56	0.12	
57	0.12	

REMARKS: THIS IS A SUMMARY OF THE INFORMATION CONTAINED IN THIS PLAN AND NOT THE ENTIRE PLAN.

DATE: 05-31-2002

REVISIONS: NONE

PREPARED FOR: JAMES C. HESTON

PROJECT: CRESTVIEW PHASE II

CONSTRUCTION OF ANY OF THE LOTS SHOWN IN THIS PLAN SHALL BE SUBJECT TO THE CITY OF LAKE KEOWEE, SOUTH CAROLINA, AND THE STATE OF SOUTH CAROLINA.

THESE LOTS ARE NOT TO BE CONSIDERED AS A UNIT OF LAND.

THESE LOTS ARE NOT TO BE CONSIDERED AS A UNIT OF LAND.

THESE LOTS ARE NOT TO BE CONSIDERED AS A UNIT OF LAND.

- NOTES:
1. ALL CORNERS ARE TO BE MARKED PER THE SURVEY.
 2. FLOOD EASEMENT TO 810 ASL CONTOUR.
 3. FLOOD EASEMENT TO 810 ASL CONTOUR.
- EXPLANATIONS:
1. IF NECESSARY, THE SURVEYOR SHALL BE RESPONSIBLE FOR THE SURVEY.
 2. IF NECESSARY, THE SURVEYOR SHALL BE RESPONSIBLE FOR THE SURVEY.
 3. IF NECESSARY, THE SURVEYOR SHALL BE RESPONSIBLE FOR THE SURVEY.
- ADDITIONAL NOTES:
1. THE SURVEYOR SHALL BE RESPONSIBLE FOR THE SURVEY.
 2. THE SURVEYOR SHALL BE RESPONSIBLE FOR THE SURVEY.
 3. THE SURVEYOR SHALL BE RESPONSIBLE FOR THE SURVEY.

John R. Hamrick
Owner
Broker in Charge

THE LAKE COMPANY
LAKE KEOWEE, SC

864-886-0098
864-886-0075 Fax
864-653-1821 Voice Mail
864-882-2832 Home
Email: jhamrick@carol.net

John Hamrick Real Estate, Inc. 1-800-361-4904